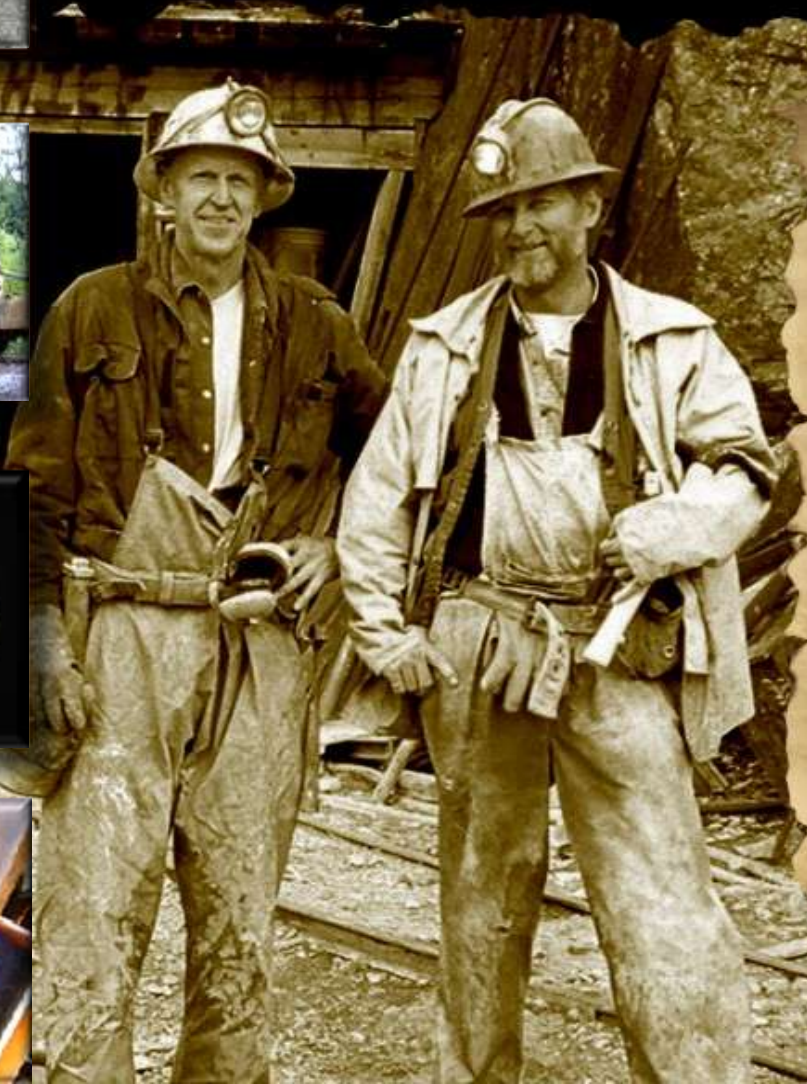




TSX-V: BCG



BCGold Corp.
"Discovery Driven"

**Engineer
Gold Mine**

**2011 Bulk Sampling
& Test Milling Program**



bc gold
CORP



Engineer Gold Mine, B.C.

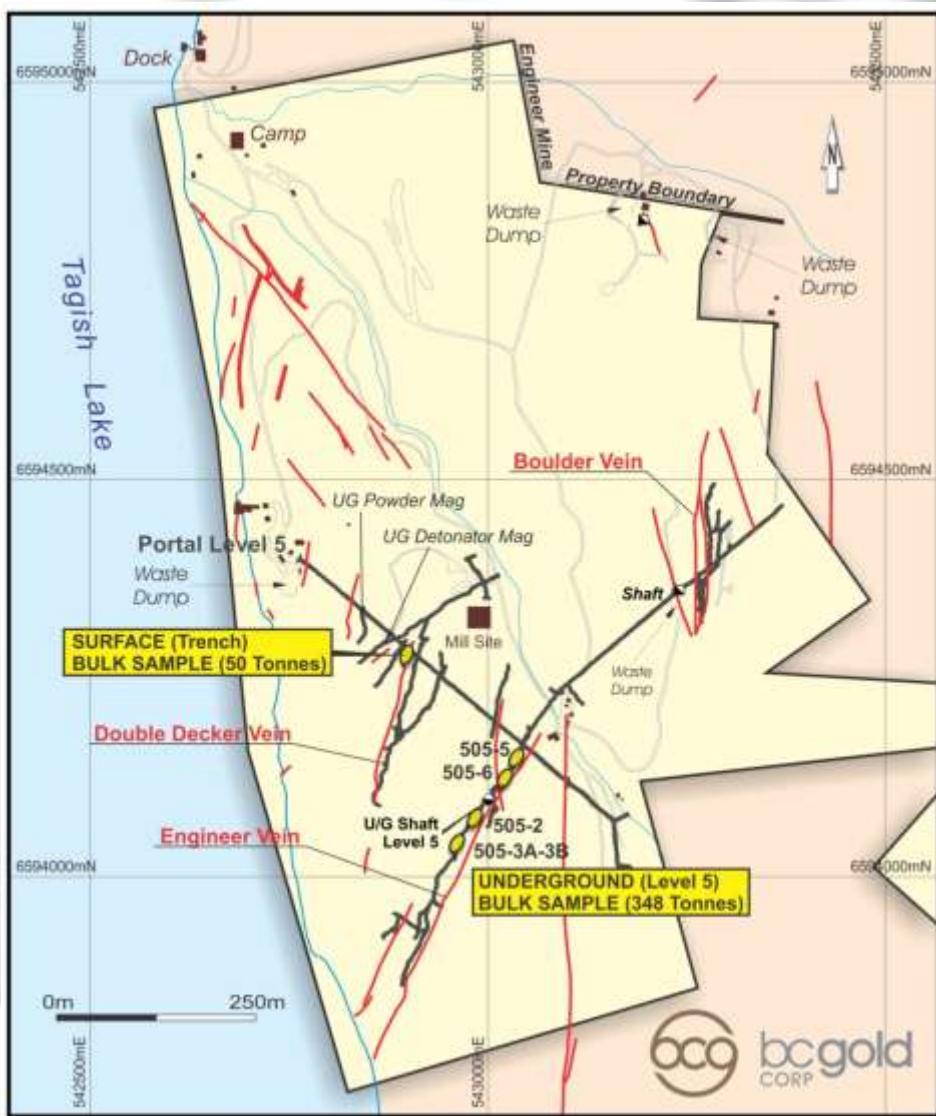


TSX-V: BCG

Engineer Mine Property Bulk Sample Location Plan



bcg gold
CORP



Mining

- 6 bulk samples (400 tonnes) mined in 2011.
- 5 Engineer Vein Samples (Level 5) & 1 Double Decker Vein Sample (Surface).

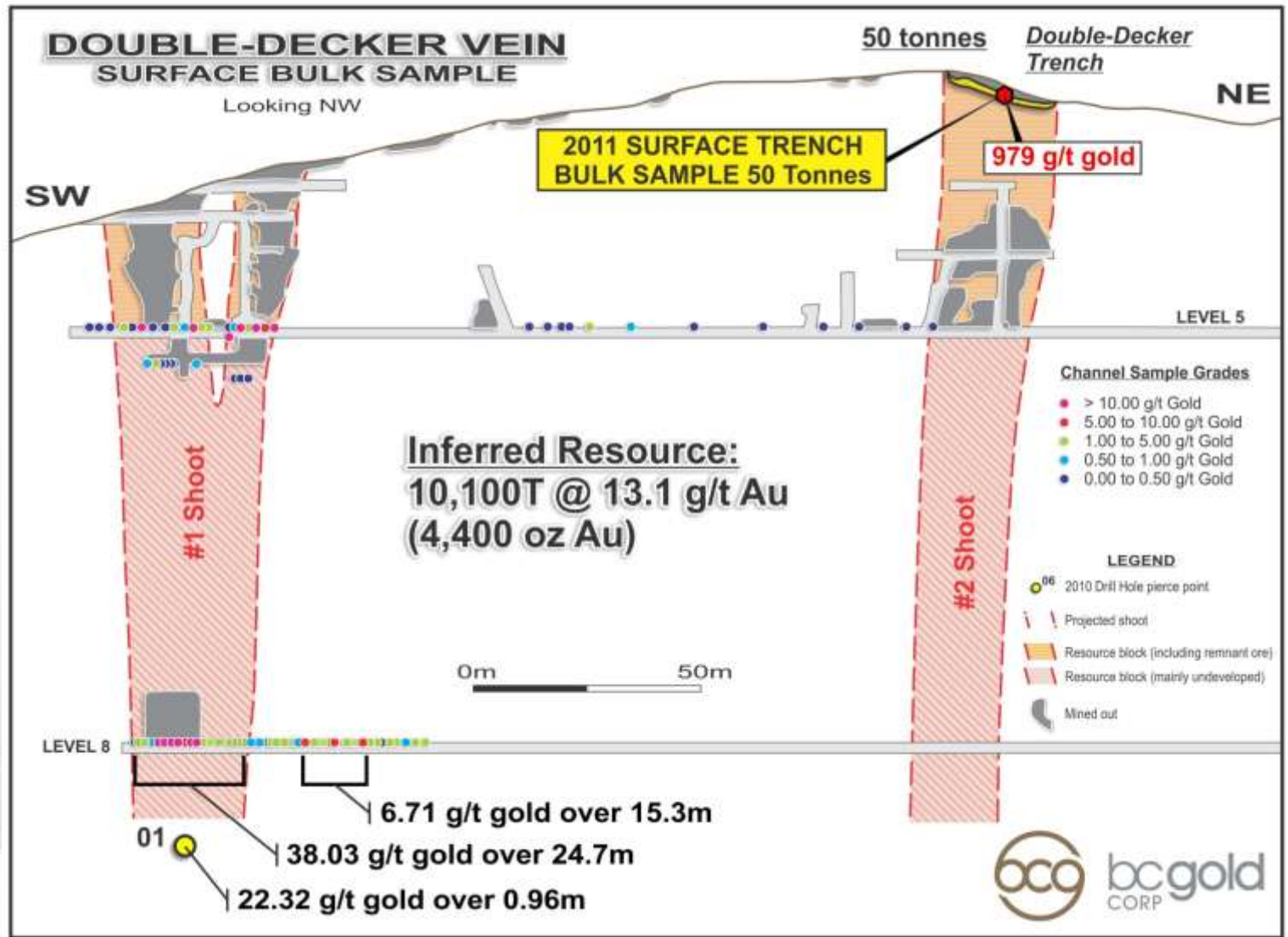
Milling

- 6 sample composites (≈250 tonnes) milled & 1,000 kg of concentrate produced between Sept. 3 – Oct. 1, 2011.
- Continuous gold streams observed on finishing table for 3 bulk samples.

Double Decker Vein Bulk Sample Location



bcg gold
CORP



TSX-V: BCG



bc gold
CORP

Double Decker Vein Surface Bulk Sample



Engineer Vein Underground Bulk Samples

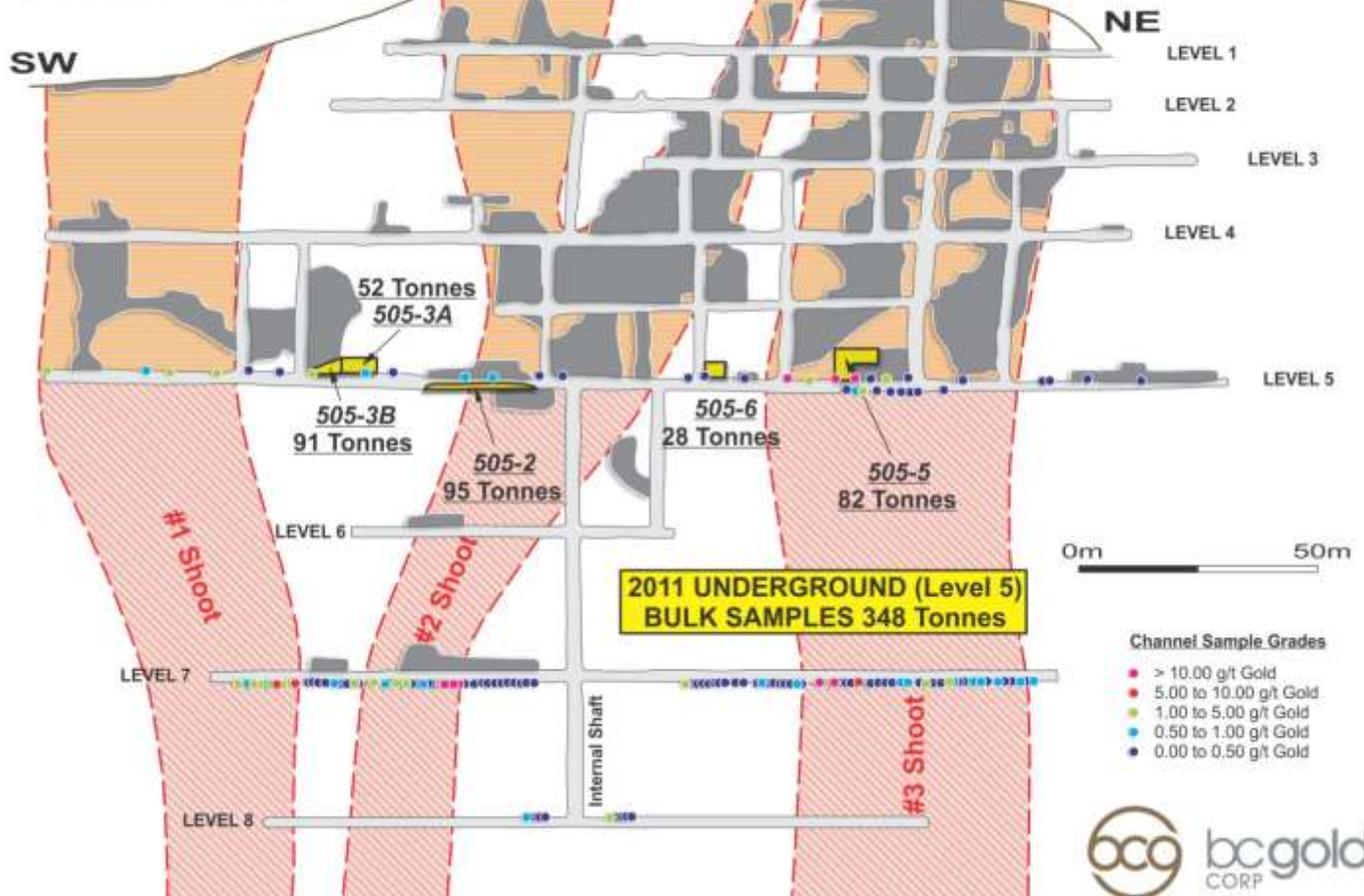


bcg gold
CORP

Inferred Resource:
30,800T @ 20.6 g/t Au
(20,400 oz Au)

ENGINEER VEIN UNDERGROUND BULK SAMPLES

Looking NW



March 2011





bcgold
CORP

Mining 505-5 Bulk Sample Engineer Vein





bc gold
CORP

Blasting & Mucking – Engineer Vein





bc gold
CORP

Wire Gold in Roscoelite 505-5 Stope





bcg gold
CORP

Tramming Engineer Bulk Samples





bc gold
CORP

Sample Loading Bay – Engineer Mine



Aerial View of Engineer Mill



bc gold
CORP





bc gold
CORP

Bulk Samples and Coarse Ore Bin





bc gold
CORP

Jaw and Roll Crushers





bc gold
CORP

Ball Mill, Fine Ore Bin & Screen Decks





bc gold
CORP

Generator & Electrical Control Panels





bc gold
CORP

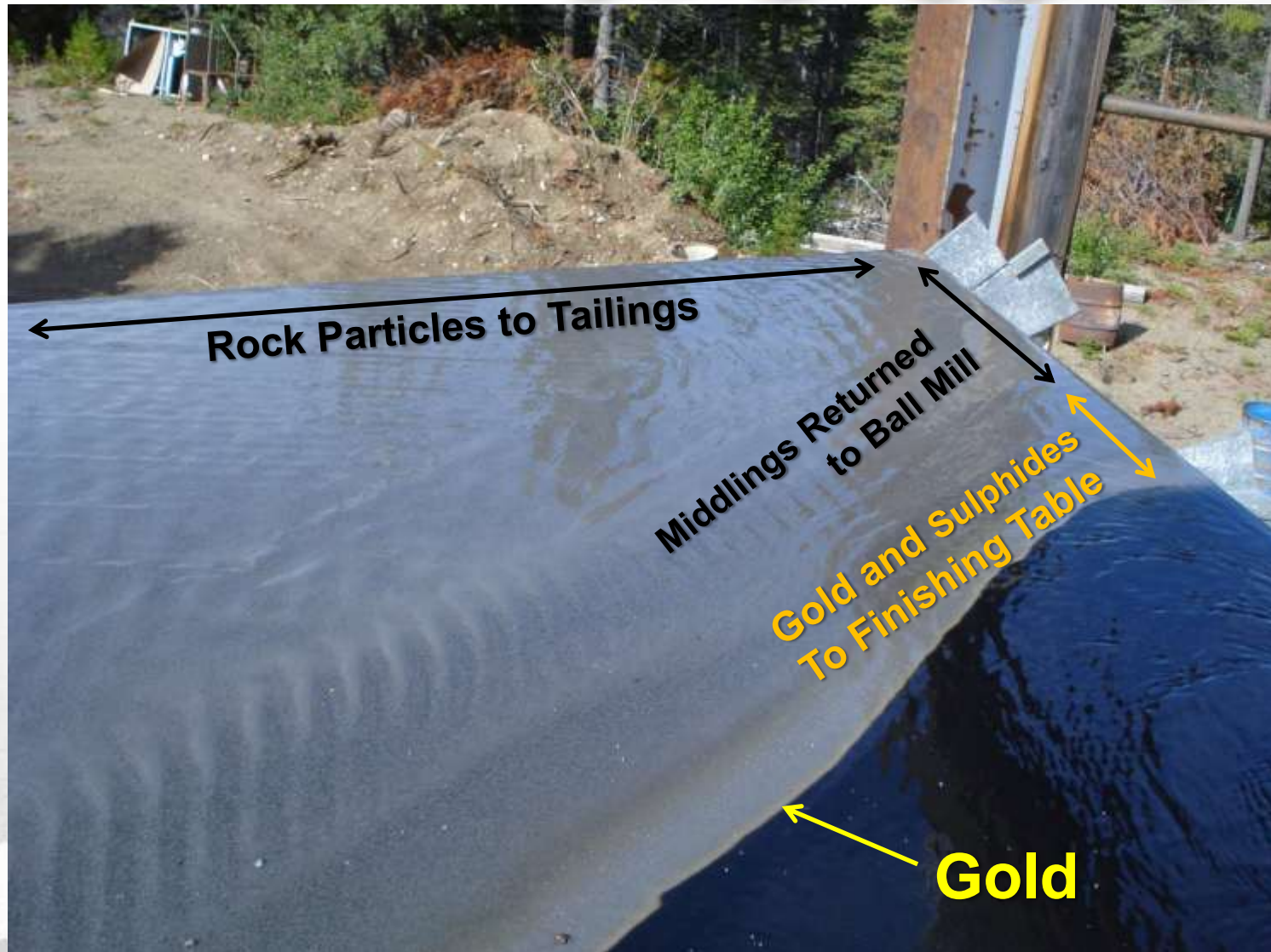
Triple Deck Deister Tables





bc gold
CORP

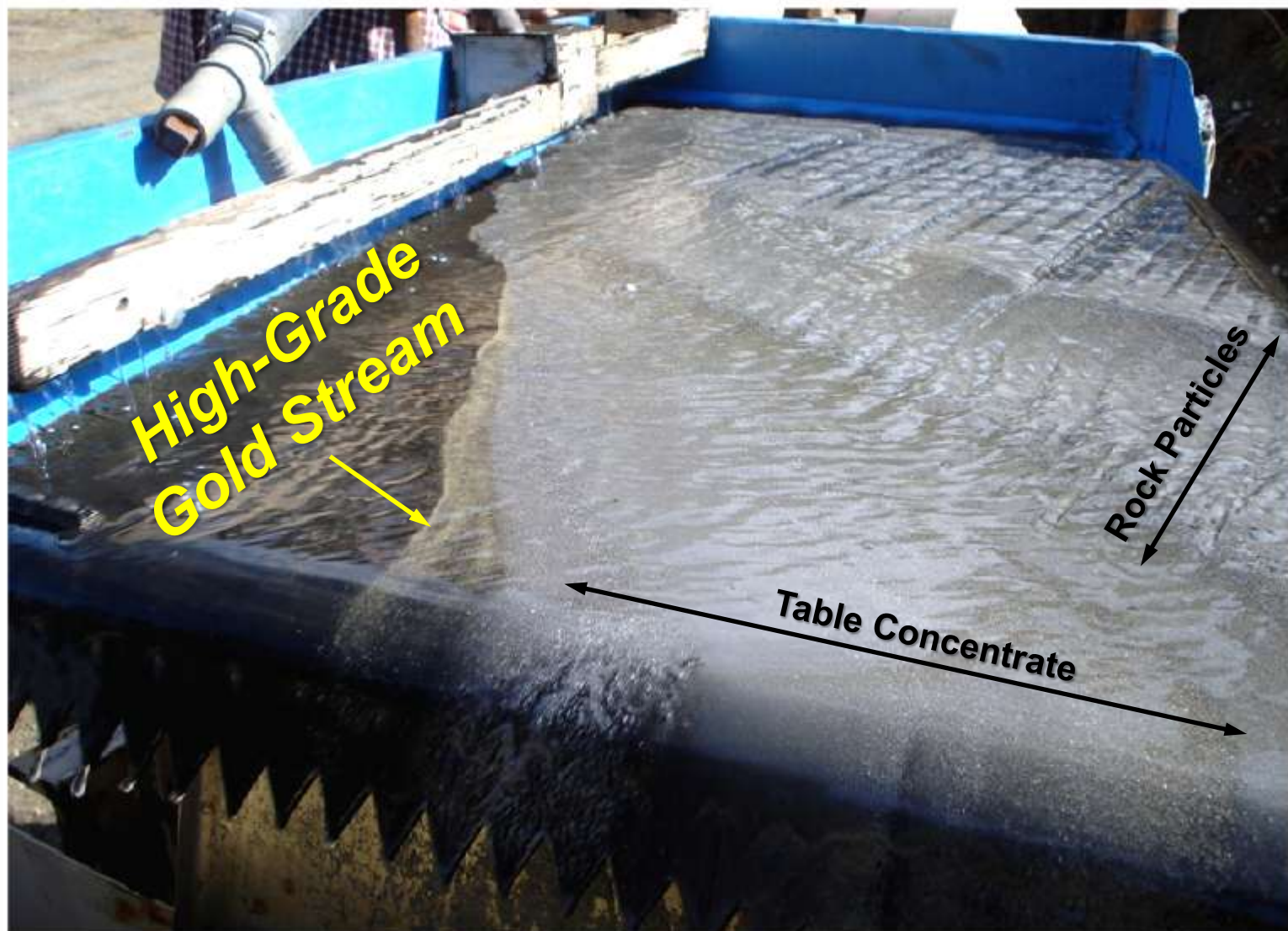
Bulk Sample 505-3A on Top Deister Table



High Grade Gold Stream and Table Concentrate (Finishing Table)



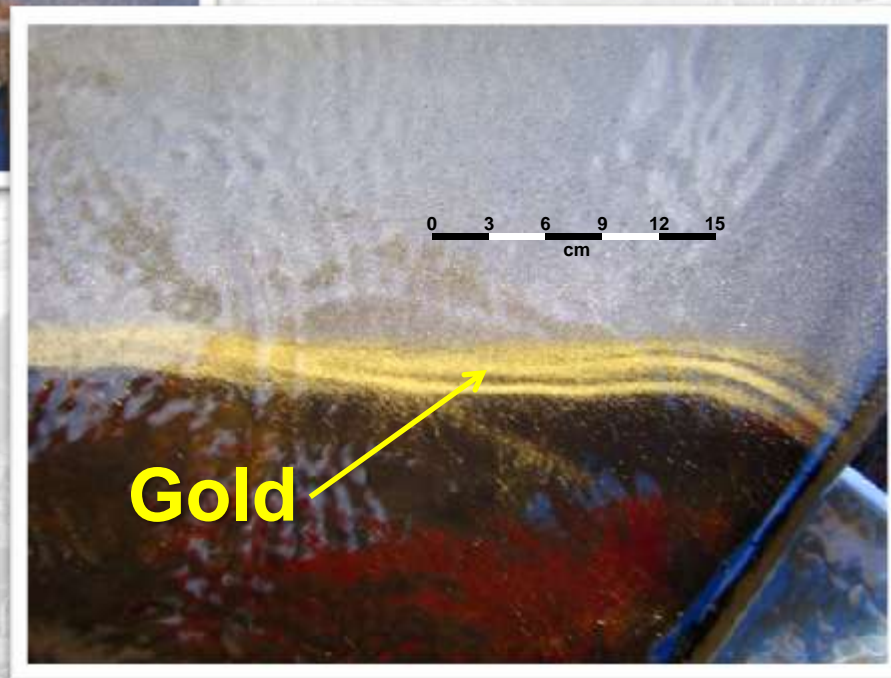
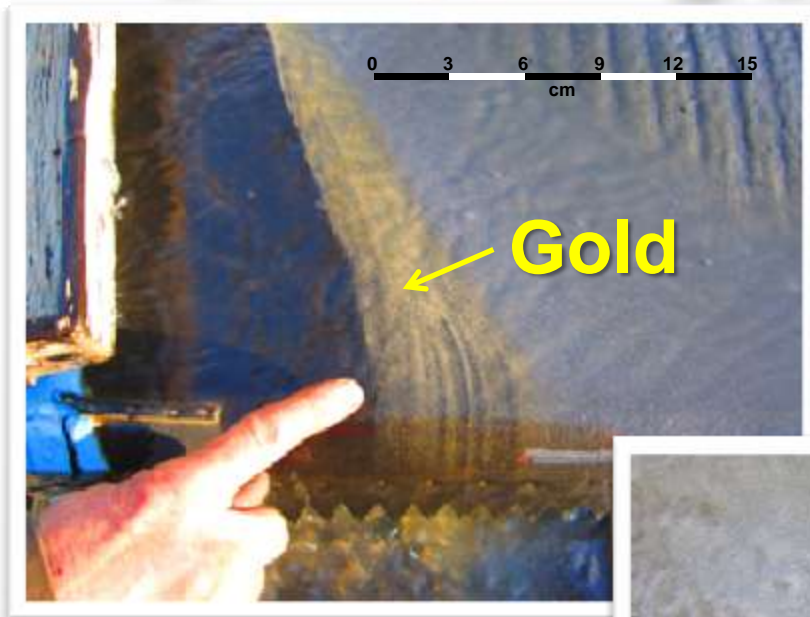
bc gold
CORP





bcgold
CORP

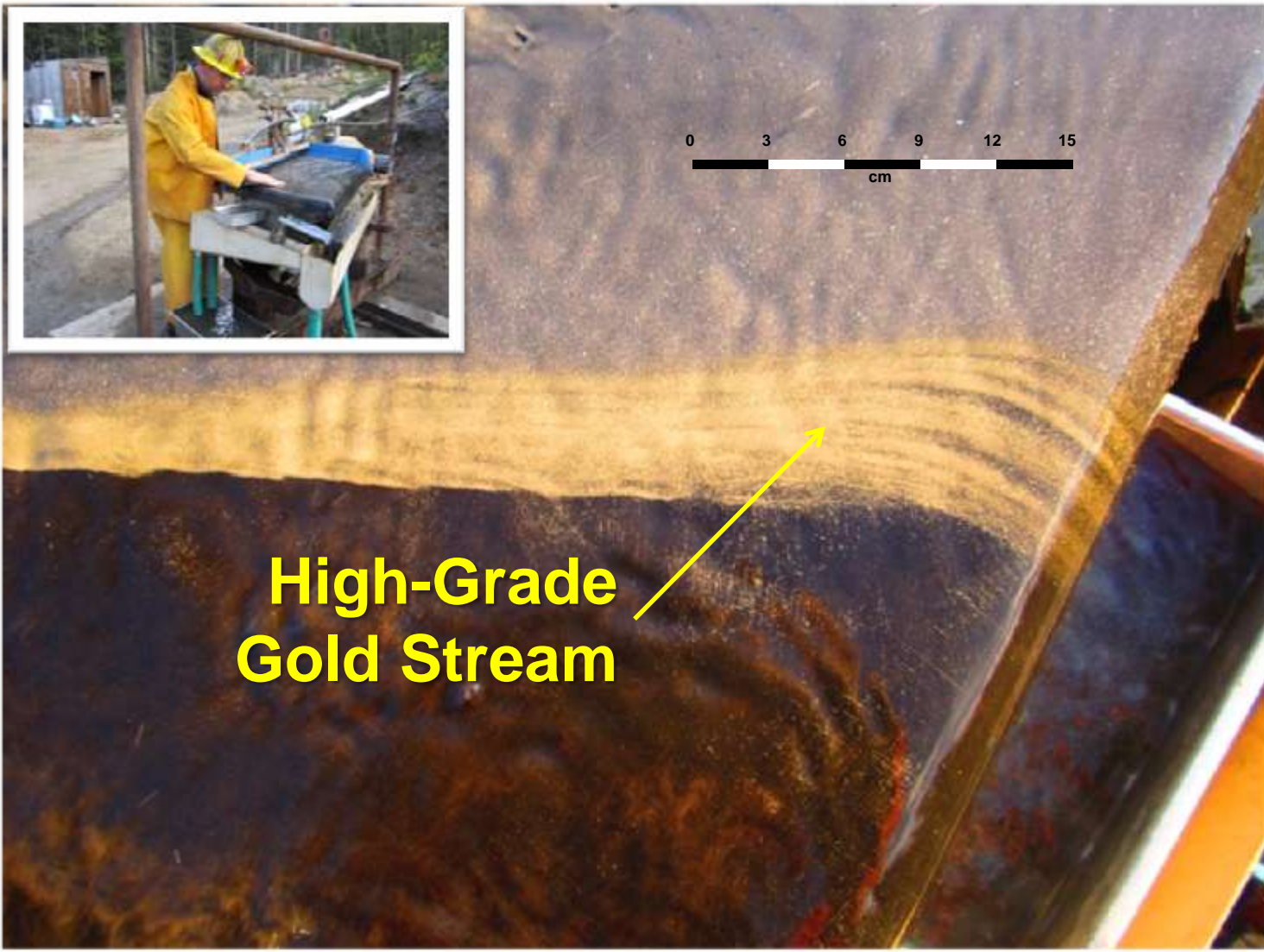
High-Grade Gold Stream – Finishing Table





bc gold
CORP

Finishing Table and Gold Stream



**High-Grade
Gold Stream**

Concentrate and Tailings Assays

- 4 Separate Gold Products from gravity separation mill to be utilized to back calculate diluted mining head grade
 - Table Concentrate, High Grade Gold Stream, Sluice Concentrate and Tailings
- Table Concentrate grades reported in table below. Assays for other products are pending.

Bulk Sample	Tonnes Milled	Concentrate Produced (dry kg)	Table Concentrate Grade			
			Gold g/t	Gold oz/t	Silver g/t	Silver oz/t
DD Trench	9.4	15.5	379.3	11.1	244.6	7.1
505-2	40.7	167.5	204.8	6.0	231.4	6.7
505-3A	35.5	172.3	1,324.1	38.6	607.7	17.7
505-3B	68.9	173.5	6,485.8	189.2	934.8	27.3
505-5	69.7	228.1	1,382.2	40.3	826.7	24.1
505-6	21.9	58.7	621.2	18.1	414.4	12.1
Total	246.1	815.6*	-	-	-	-



bcgold
CORP

LESSONS LEARNED

- \approx 250 tonnes milled and \approx 1,000 kg of concentrate produced between Sept. 3 – Oct. 1, 2011.
- Bulk sample results indicate conventional gold grade determination (chip sampling and drilling) under-estimates gold content.
- Diluted mining head grades will be determined once Sluice and High Grade Gold Stream concentrate assays have been received in January, 2012.
- Concentrate samples have been shipped to Gekko Systems for bench scale gravity and leach amenability metallurgical test work. Metallurgical results expected in early 2012 and will:
 - determine marketability of concentrate.
 - recommend mill modifications to enhance onsite gold recovery.
- Net proceeds from recovered gold to be applied towards 2012 exploration and development program.