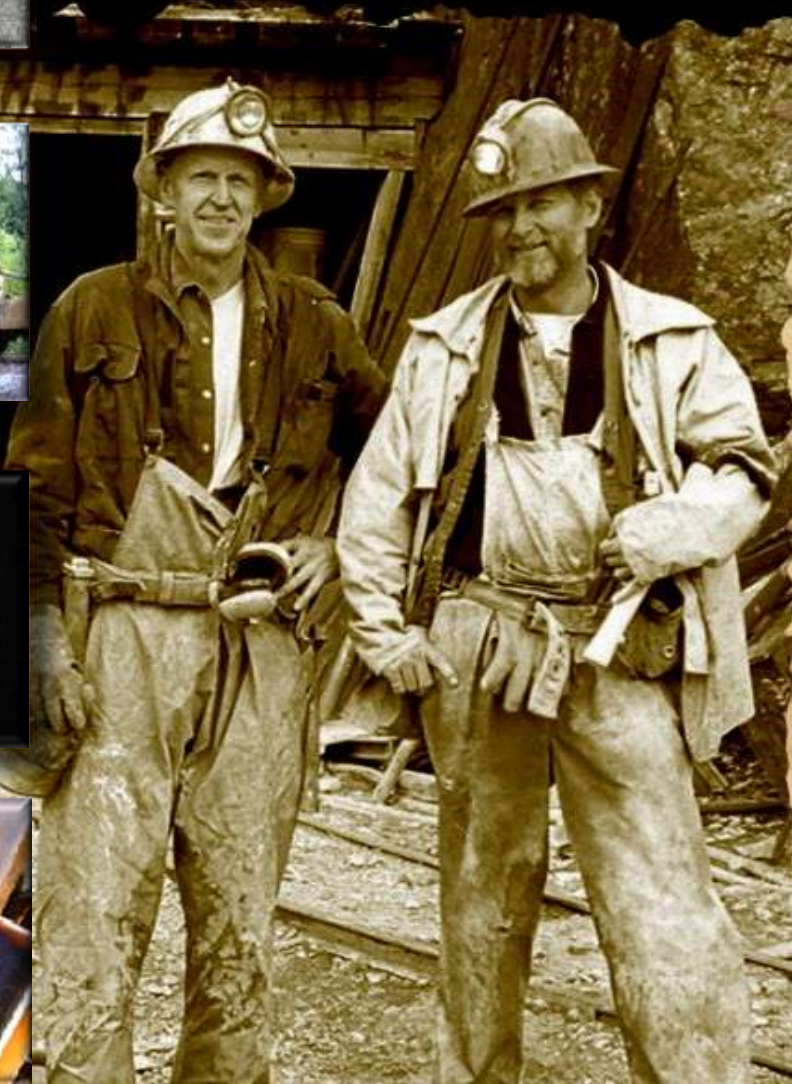




TSX-V: BCG



BCGold Corp.
"Discovery Driven"

**Engineer
Gold Mine**

**2011 Bulk Sampling
& Test Milling Program**



bc gold
CORP



Engineer Gold Mine, B.C.

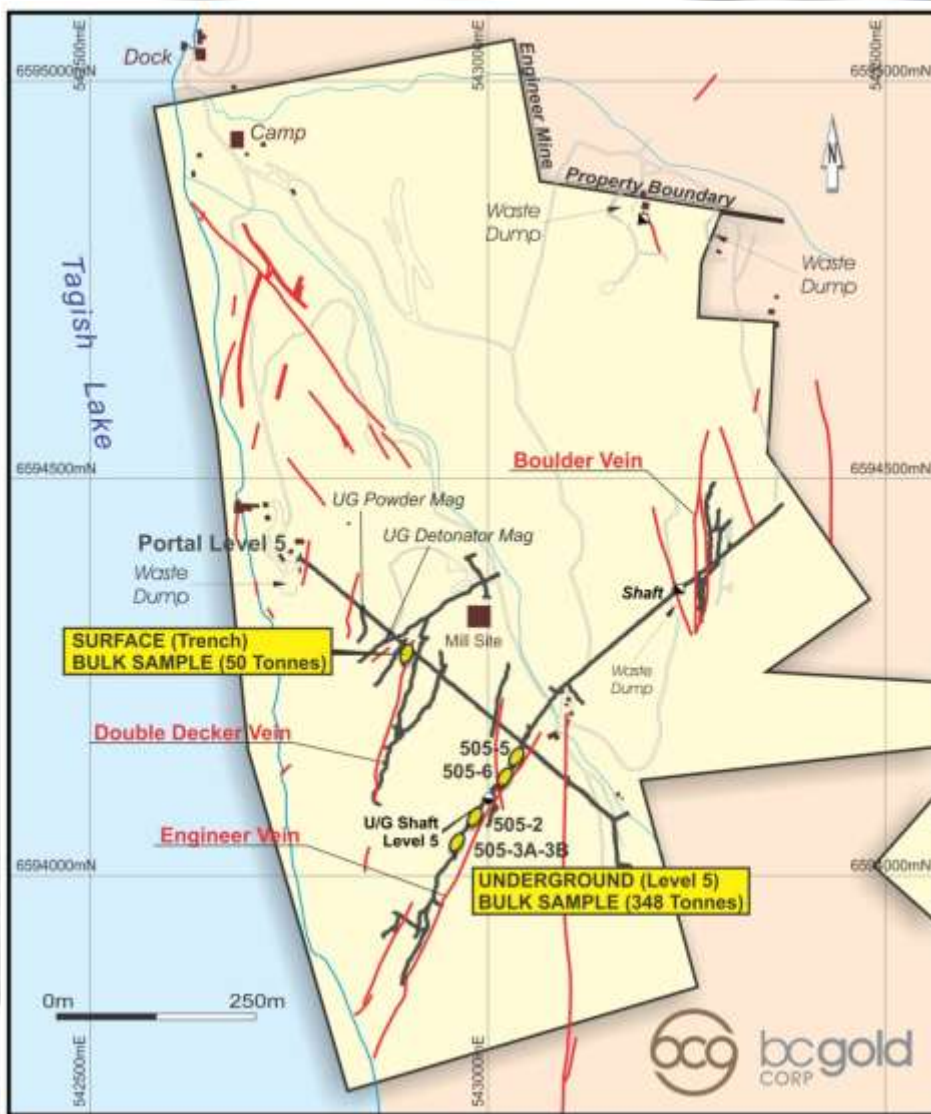


TSX-V: BCG

Engineer Mine Property Bulk Sample Location Plan



bcg
CORP



Mining

- 6 bulk samples (400 tonnes) mined in 2011.
- 5 Engineer Vein Samples (Level 5) & 1 Double Decker Vein Sample (Surface).

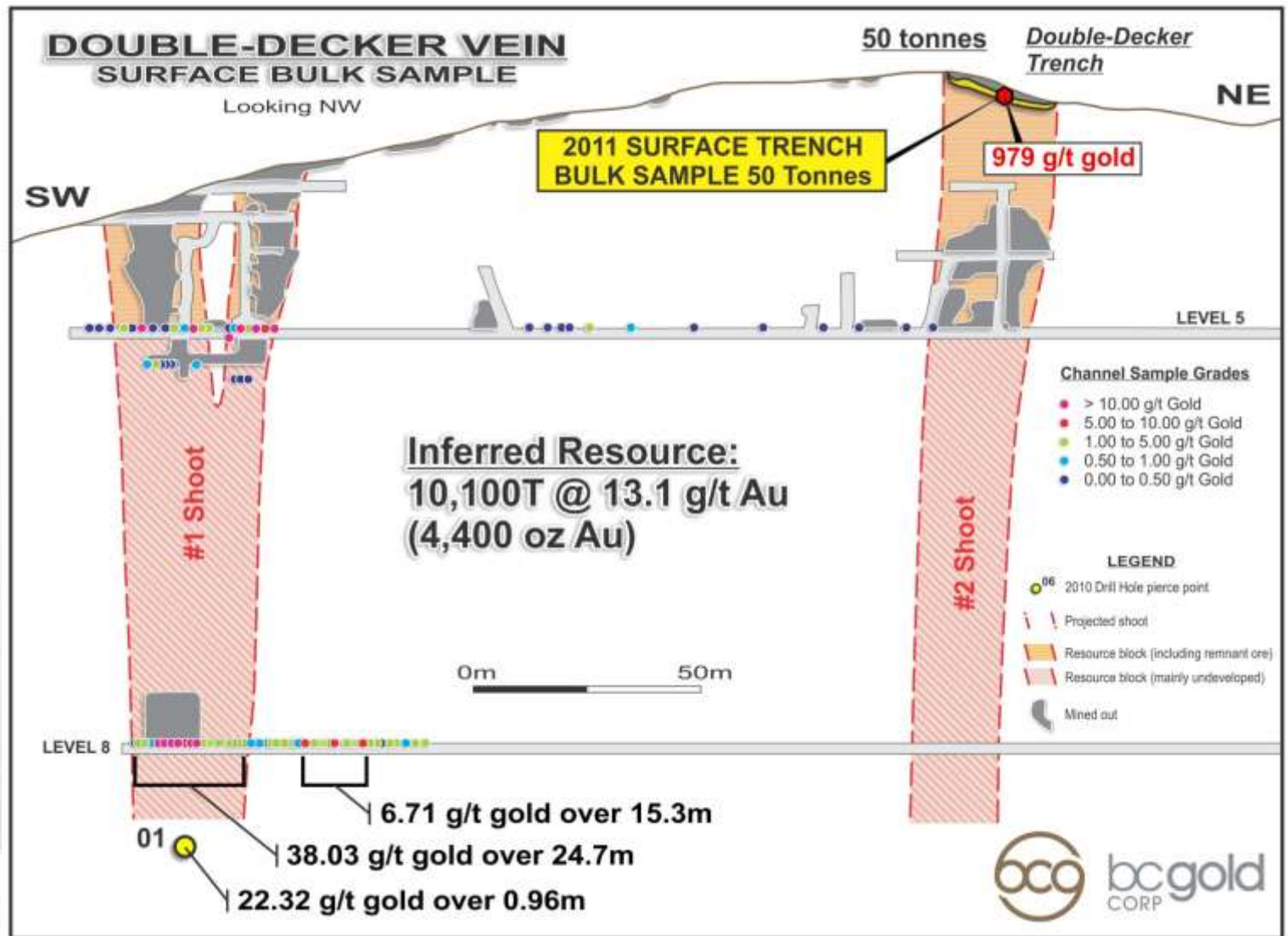
Milling

- 6 sample composites (≈300 tonnes) milled & ≈800 kg of concentrate produced between Sept. 3 – Oct. 1, 2011.
- Continuous gold streams observed on finishing table for 3 bulk samples.



bcg gold
CORP

Double Decker Vein Bulk Sample Location





bc gold
CORP

Double Decker Vein Surface Bulk Sample



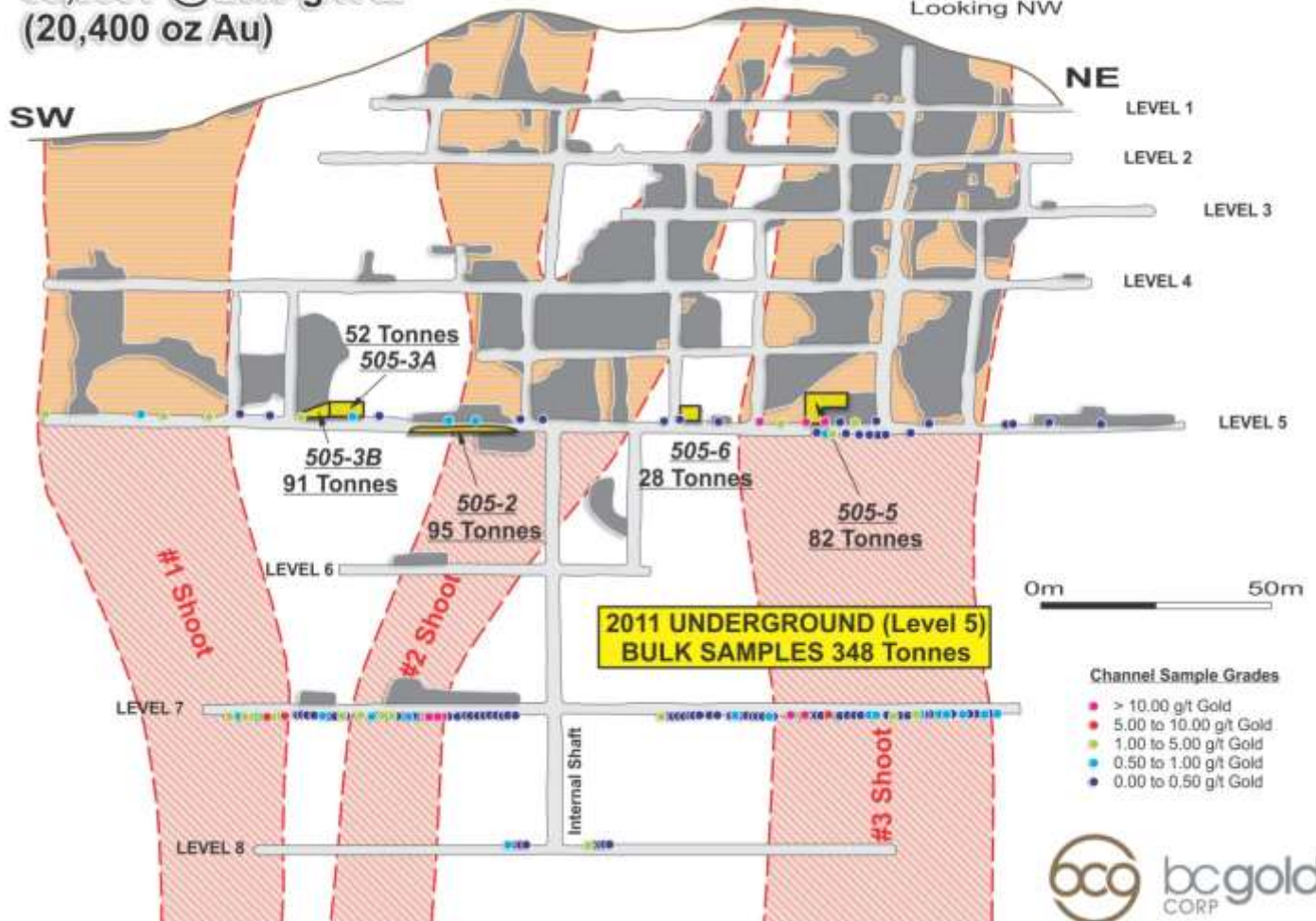
Engineer Vein Underground Bulk Samples



bcg gold
CORP

Inferred Resource:
30,800T @ 20.6 g/t Au
(20,400 oz Au)

ENGINEER VEIN UNDERGROUND BULK SAMPLES Looking NW



March 2011





bcgold
CORP

Mining 505-5 Bulk Sample Engineer Vein





bc gold
CORP

Blasting & Mucking – Engineer Vein



TSX-V: BCG



bc gold
CORP

Wire Gold in Roscoelite 505-5 Stope





bcg gold
CORP

Tramming Engineer Bulk Samples





bc gold
CORP

Sample Loading Bay – Engineer Mine





bc gold
CORP

Aerial View of Engineer Mill – 30 tpd





bc gold
CORP

Bulk Samples and Coarse Ore Bin





bc gold
CORP

Jaw and Roll Crushers





bc gold
CORP

Ball Mill, Fine Ore Bin & Screen Decks





bc gold
CORP

Generator & Electrical Control Panels





bc gold
CORP

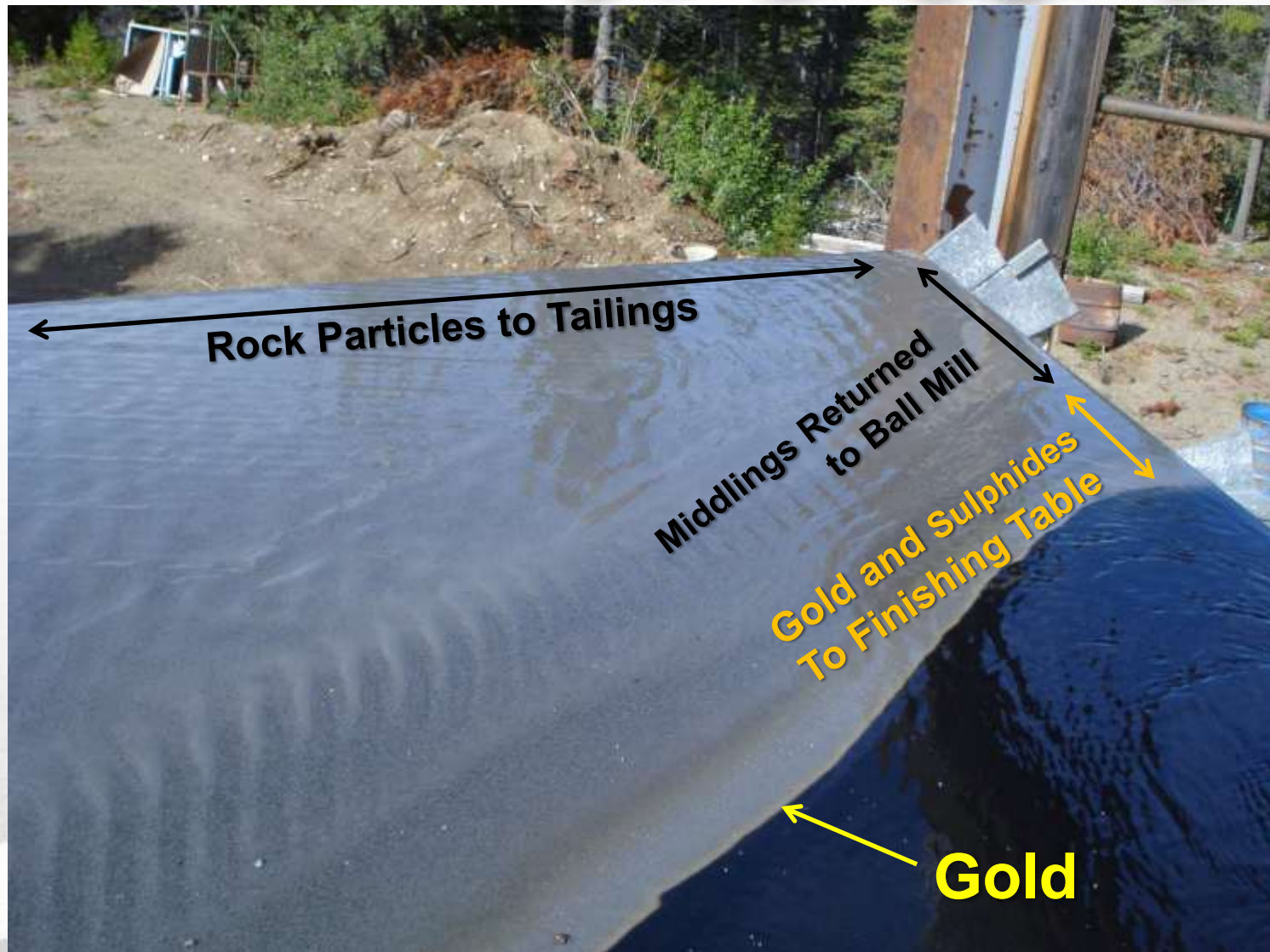
Deister Tables





bc gold
CORP

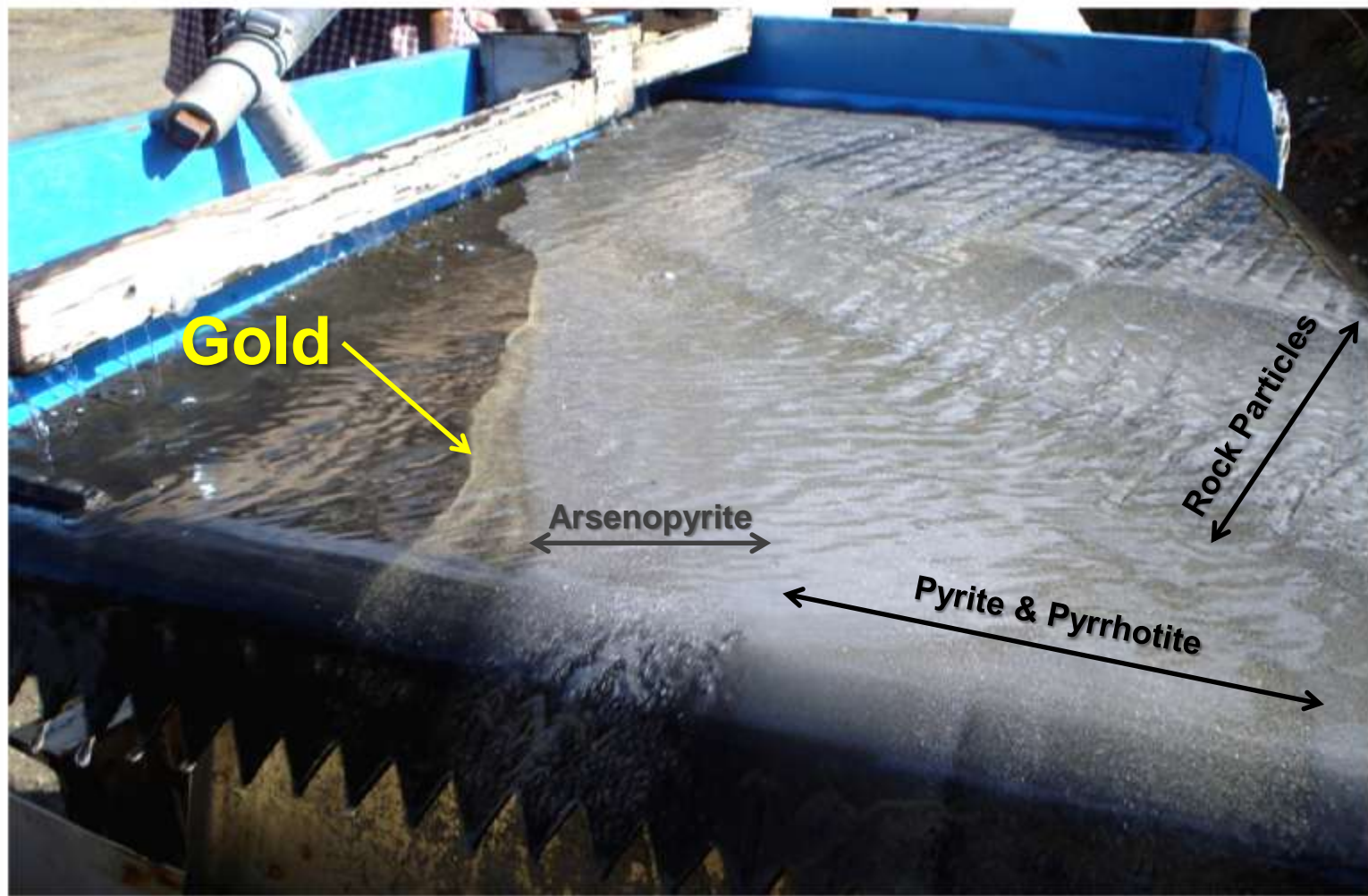
Bulk Sample 505-3A on Deister Table





bc gold
CORP

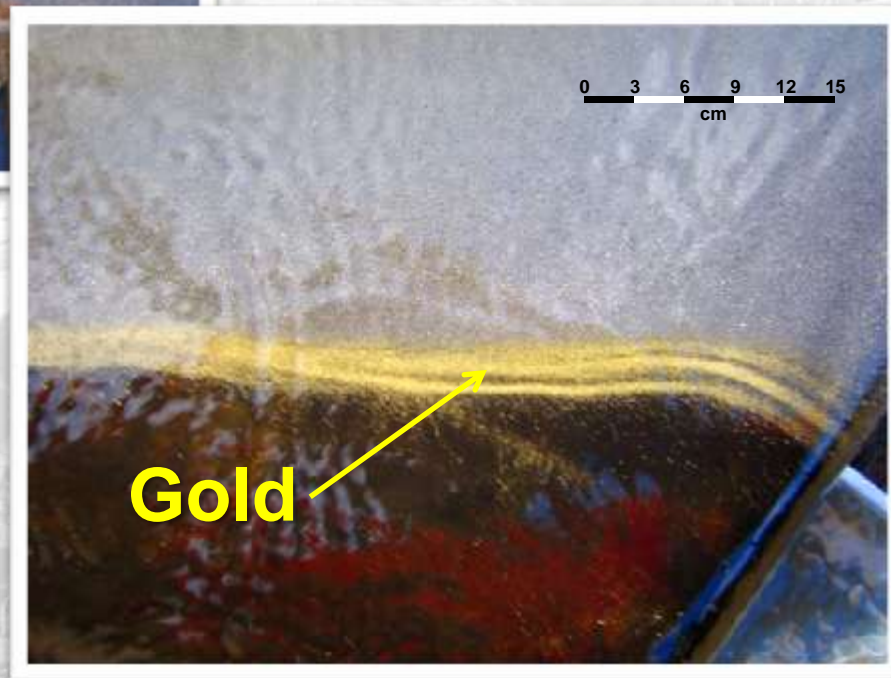
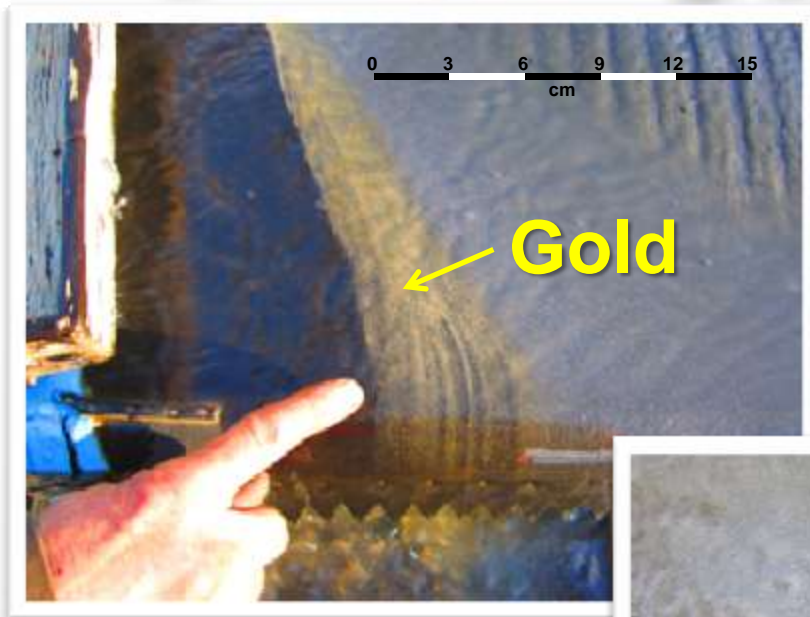
Bulk Sample 505-3A on Finishing Table





bcgold
CORP

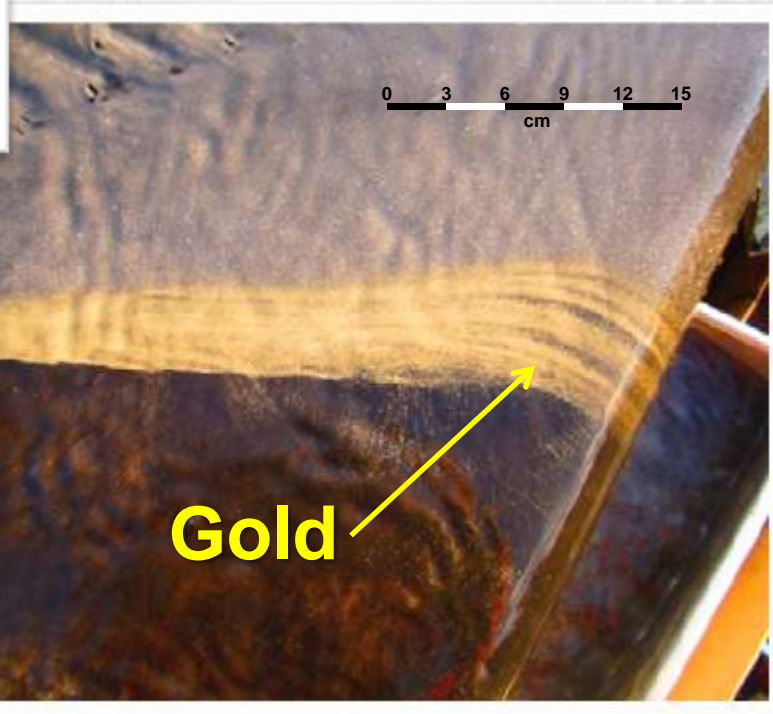
Engineer Vein Gold – Finishing Table



Finishing Table and Gold Line



bc gold
CORP





bcgold
CORP

WE HAVE GOLD – NOW WHAT?

- \approx 300 tonnes milled and \approx 800 kg of concentrate produced between Sept. 3 – Oct. 1, 2011.
- Mill feed samples and concentrate to be shipped to Gekko Systems for bench scale gravity and leach amenability metallurgical test work.
- Assay results expected before year-end.
- Metallurgical results expected in early 2012 and will:
 - determine marketability of concentrate,
 - recommend mill modifications to enhance onsite gold recovery,
 - provide basis for continued bulk sampling and mining.
- Net proceeds from recovered gold to be applied towards 2012 exploration and development program.