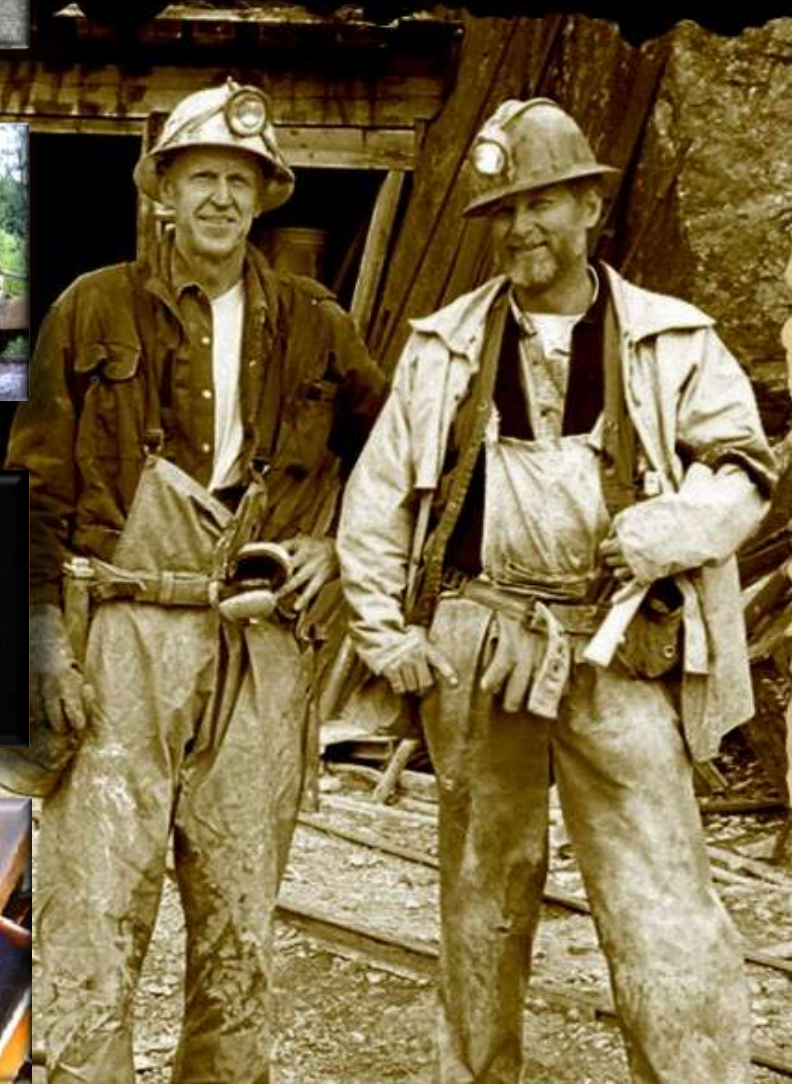




TSX-V: BCG



BCGold Corp.
"Discovery Driven"

**Engineer
Gold Mine, B.C.**

**2011 Bulk Sampling,
Test Milling &
Exploration Program**



bcgold
CORP

Cautionary Statement

This presentation does not constitute an offer to sell or solicitation of an offer to buy securities of BCGold Corp.

FORWARD LOOKING STATEMENTS

This presentation contains "forward-looking statements". These forward-looking statements are made as of the date of this presentation and BCGold Corp. does not intend, and does not assume any obligation, to update these forward-looking statements.

Forward-looking statements include, but are not limited to, statements with respect to the timing and amount of estimated future exploration, success of exploration activities, expenditures, permitting, and requirements for additional capital and access to data.

Forward-looking statements involve known and unknown risks, uncertainties and other factors which may cause the actual results, performance or achievements of the Company to be materially different from any future results, performance or achievements expressed or implied by the forward-looking statements. Such factors include, among others, risks related to actual results of current exploration activities; changes in project parameters as plans continue to be refined; the ability to enter into joint ventures or to acquire or dispose of property interests; future prices of mineral resources; accidents, labor disputes and other risks of the mining industry; ability to obtain financing; and delays in obtaining governmental approvals or financing.



bcgold
CORP

Exploration Strategy

- BCGold Corp. is a Vancouver-based junior resource company focused on gold and copper exploration in under-explored historic and emerging mining districts in British Columbia and Yukon.
- BCGold Corp. acquires and develops conceptual, early and mid-stage exploration opportunities and advances them towards resource development by using internal expertise, engaging preferred joint venture partners, and creating strategic alliances with major exploration and mining companies.
- BCGold Corp.'s primary focus is continued exploration, resource expansion and advancement of the Engineer Mine Property to sustainable, near-term, small scale production.



Engineer Mine – Yesterday and Today

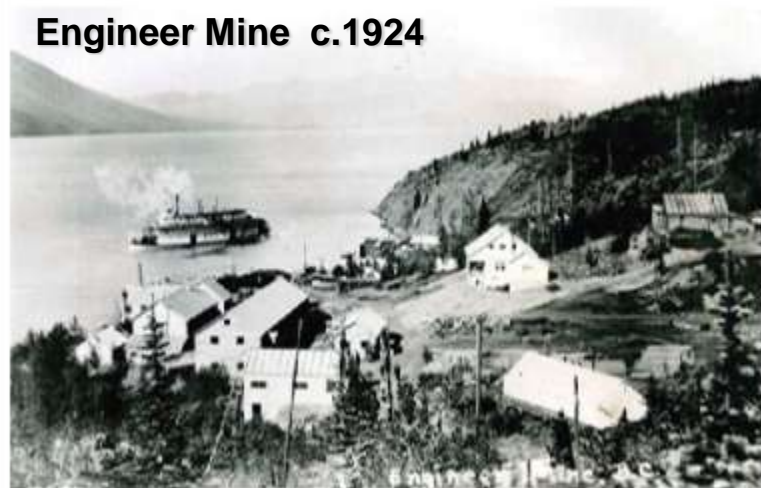
bc gold
CORP



Historic Mill



Engineer Mine c.1924



30 tpd Mill



Mining Equipment



TSX-V: BCG



Engineer Mine Property, B.C.

bc gold
CORP



TSX-V: BCG



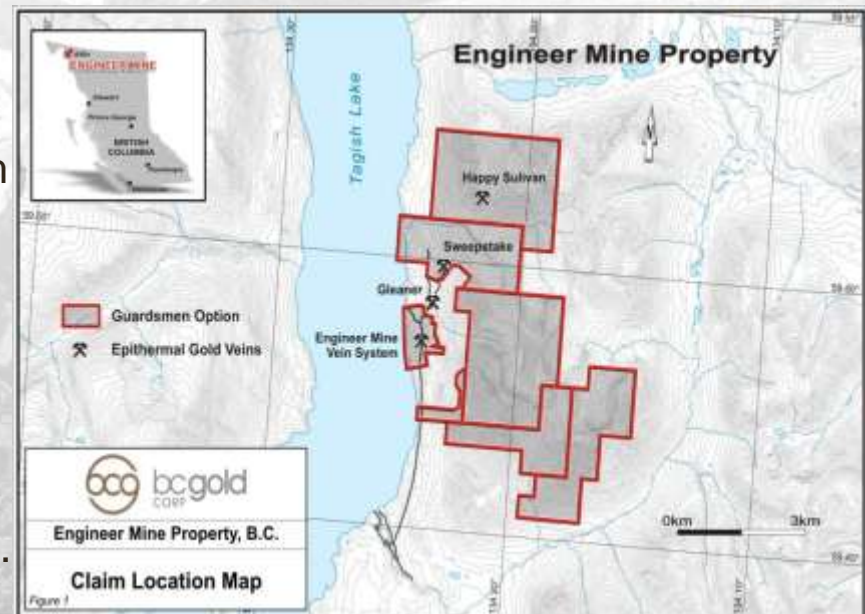
bcgold
CORP

Engineer Mine Property, B.C.



- Historic high-grade epithermal gold-silver mine (2,200 ha).
- Barge and ice road accessible, 32 km west of Atlin, B.C.
- Past production 18,000 oz Au and 8,950 oz Ag in 1920's.
- Average historic grade of 39 g/t Au and 20 g/t Ag.

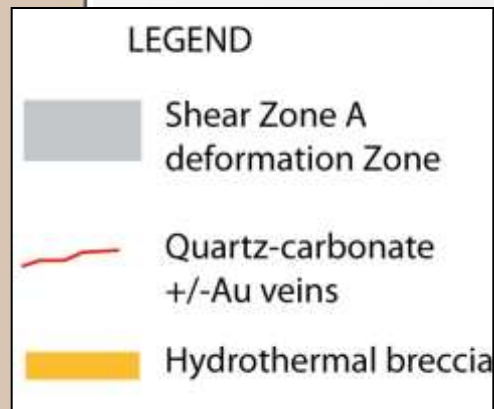
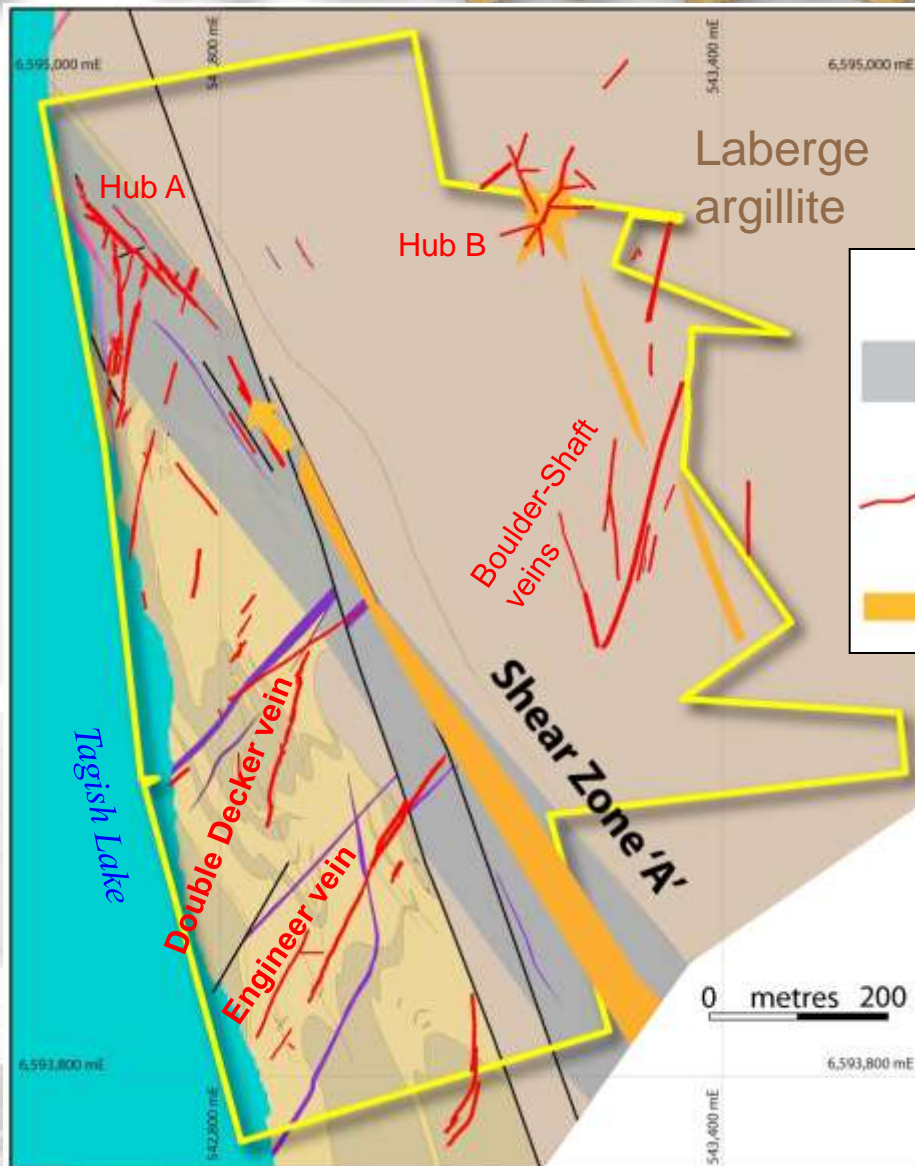
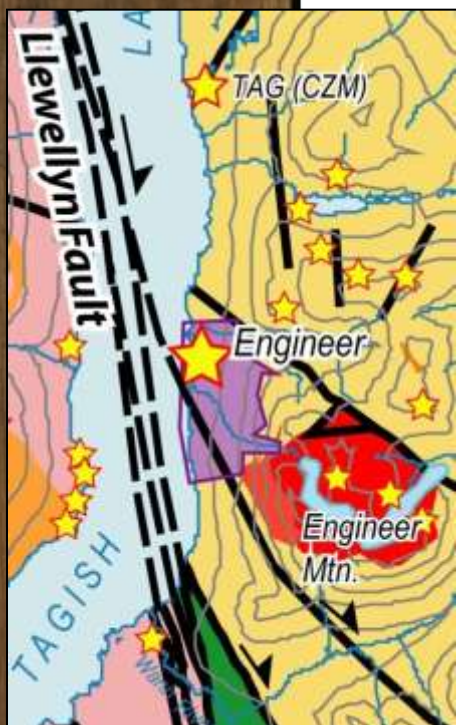
- BCGold Corp. owns 75% with option to earn 100% by 2013.
- Excellent high-grade, near-term production potential.
- Permitted 30 tpd mill on site.
- BCGold produced 969.2 kg of bulk sample concentrates in 2011, averaging 2,193 g/t Au, (64 oz/ton) containing 68 oz Au.





Engineer Mine – Property Geology

bc gold
CORP

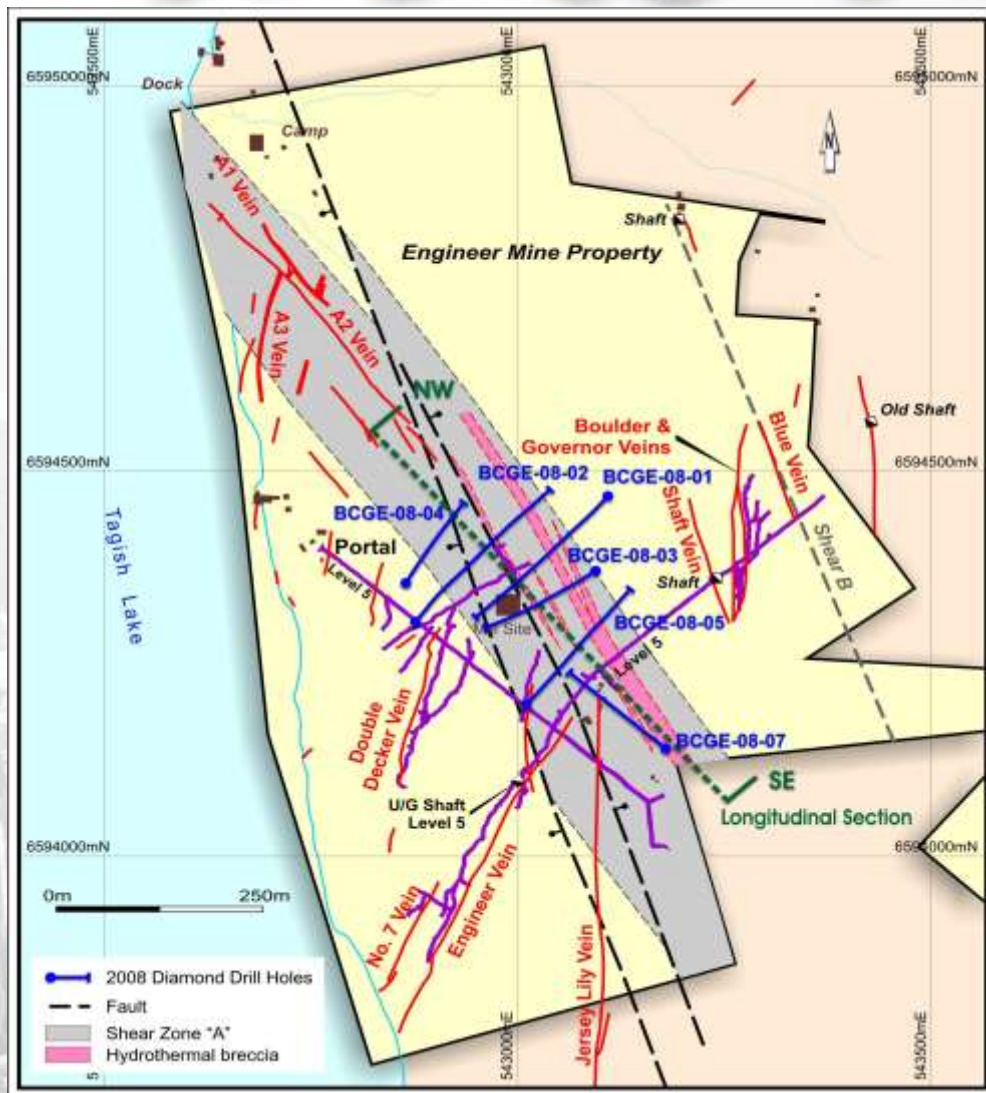


TSX-V: BCG



Engineer Mine Property - Veins, Underground Development & Previous Work

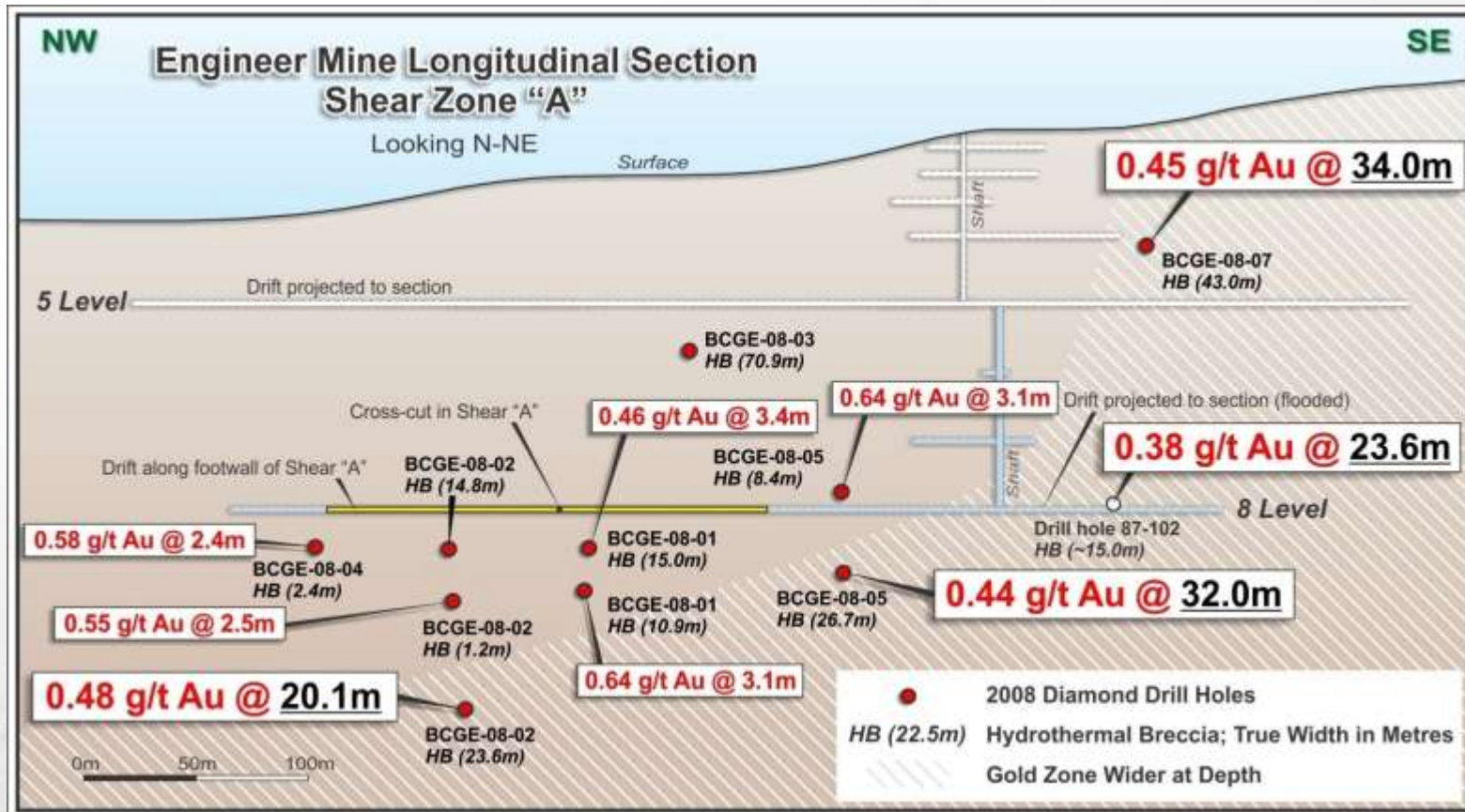
- 5,500 m of development on 8 levels.
- 5th Level portal with rail.
- 2 styles of epithermal gold mineralization.
- Narrow high grade veins (0.3 – 3.0 m, >1 oz/ton Au).
- Broad, low grade shear structures with hydrothermal breccias.
- Unexplored below 200 m from surface.
- BCGold conducted 1,850 m drill program in 2008 (Shear Zone A), 1,100 m UG drill programs in 2010 (Engineer & Double Decker Veins) & mined and milled 6 bulk samples (246.1 tonnes) as part of a 2011, \$1.1 million exploration program.





bcgold
CORP

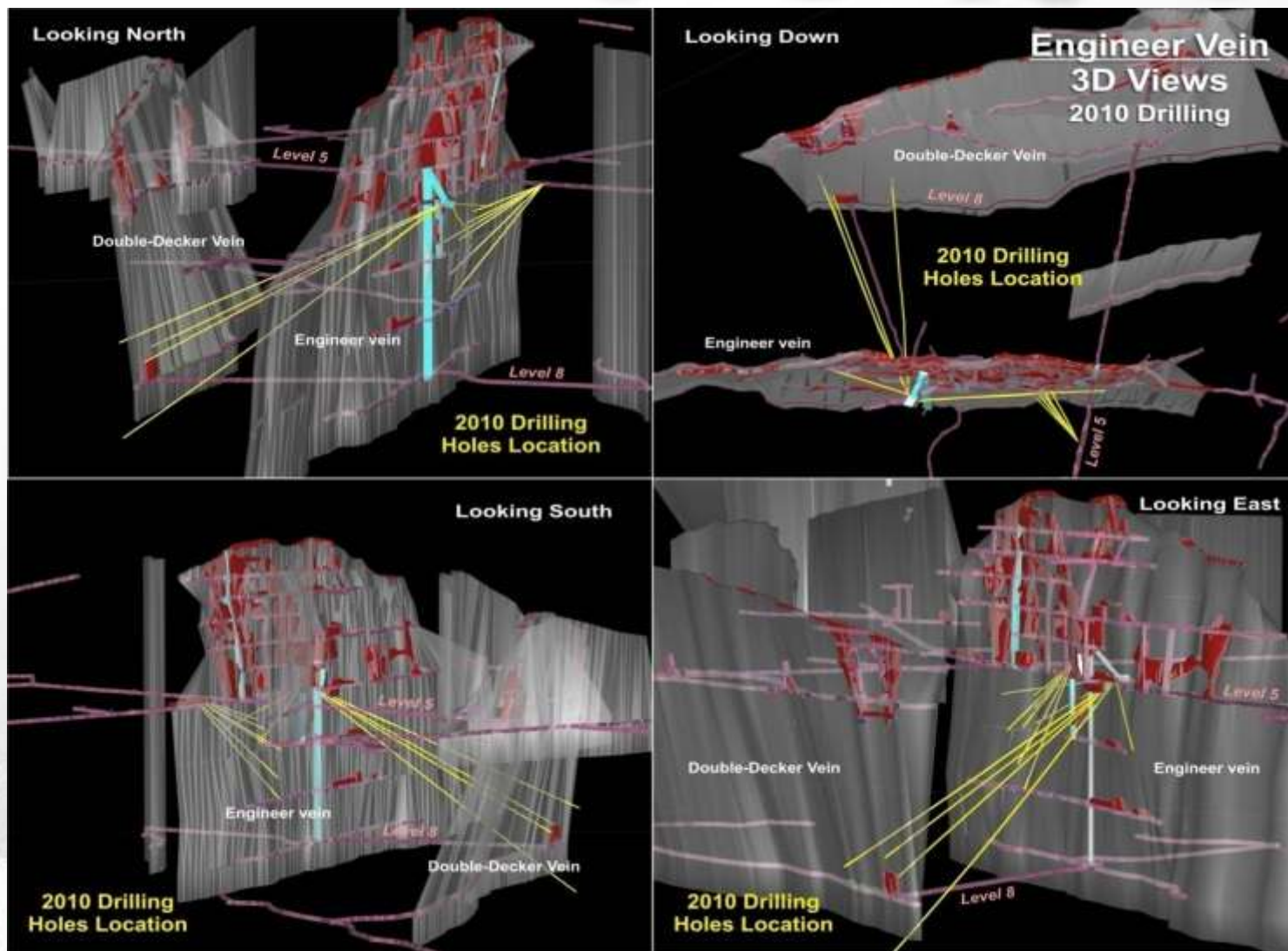
Shear Zone 'A' 2008 Bulk Tonnage Gold Exploration Target





Engineer Mine Property Vulcan™ Model & 2010 Underground Drilling

bcgold
CORP



TSX-V: BCG



bcgold
CORP

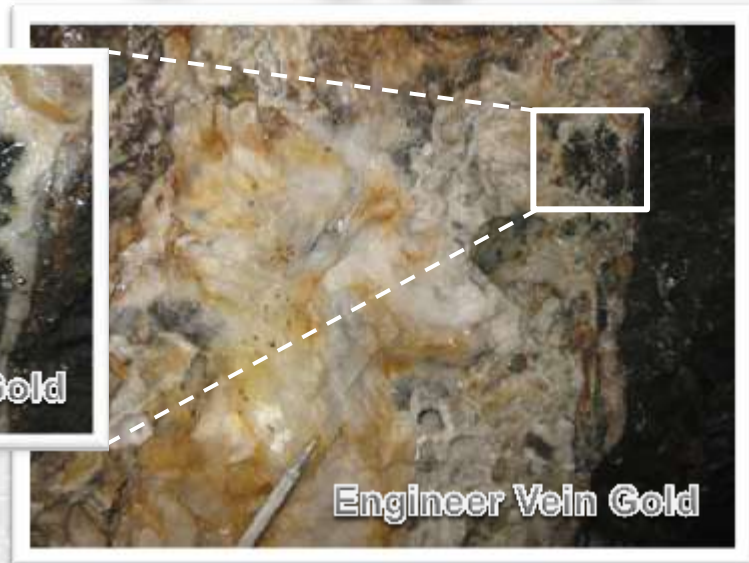
Engineer Mine – Vein Mineralogy

Vein mineralogy

- Quartz-carbonate-muscovite
- roscoelite
- arsenopyrite
- arsenic
- antimony
- allemontite (native arsenic+stibarsen)
- stibnite
- pyrrhotite

Ore minerals: Au, Ag (electrum)

- Occurs free in quartz, and bonanza grades with roscoelite



Boulder Vein Sheet Gold



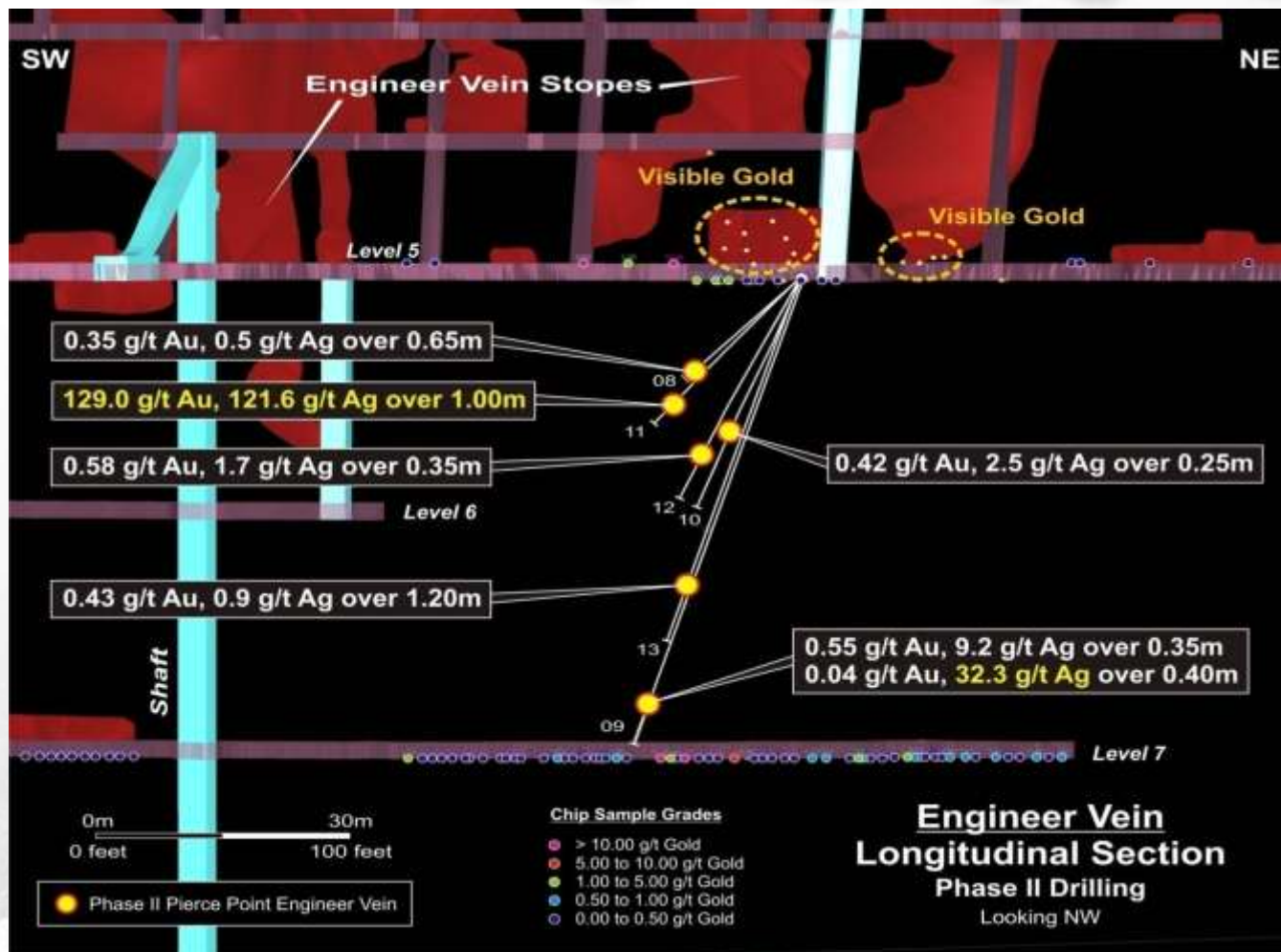
Engineer Vein Gold





Engineer Vein Long Section 2010 Underground Drilling Results

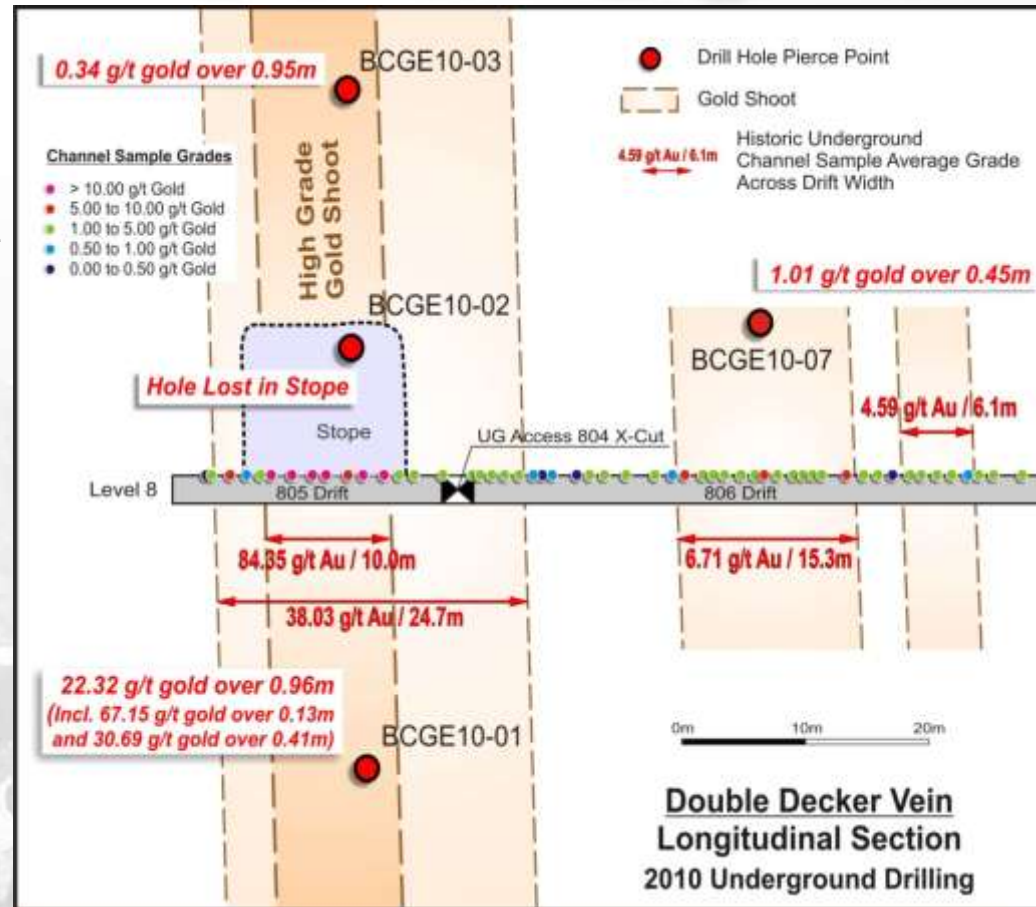
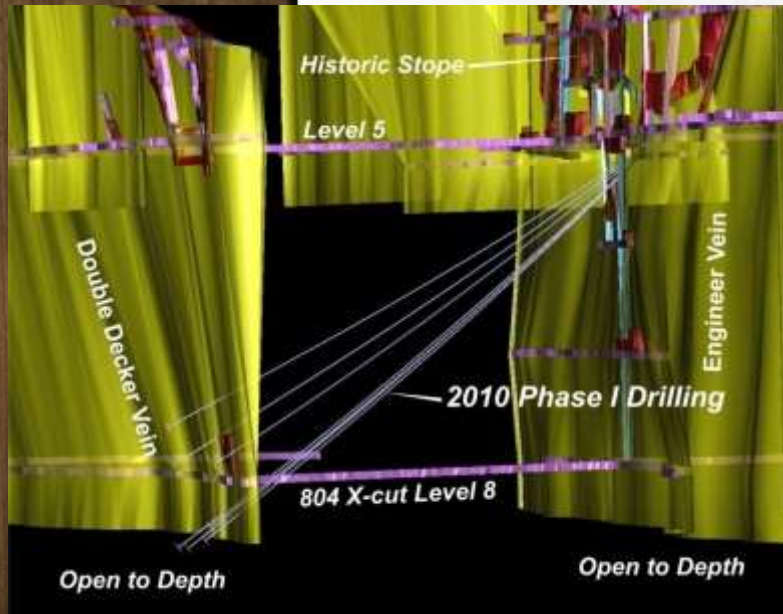
bcgold
CORP





Double Decker Vein Long Section 2010 Underground Drilling Results

- High-grade gold confirmed 21 metres below deepest mine level (8 Level).





bcgold
CORP

SNOWDEN Engineer Mine Resource Estimate

ENGINEER MINE INFERRED MINERAL RESOURCE ESTIMATE *

Cut-Off	Category	Vein	Tonnes	Au (g/t)	Contained Au (oz)
5 g/t Au	Inferred	Engineer	30,800	20.6	20,400
	Inferred	Double Decker	10,100	13.1	4,400
	Total⁽³⁾		41,000	19.0	25,000
25 g/t Au	Inferred	Engineer	10,400	60	20,100
	Inferred	Double Decker	3,600	30	3,500
	Total⁽³⁾		14,000	52.5	23,600

Note: Mineral Resources which are not Mineral Reserves do not have demonstrated economic viability.

* April 18th, 2011 Snowden NI 43-101 estimate



bcgold
CORP

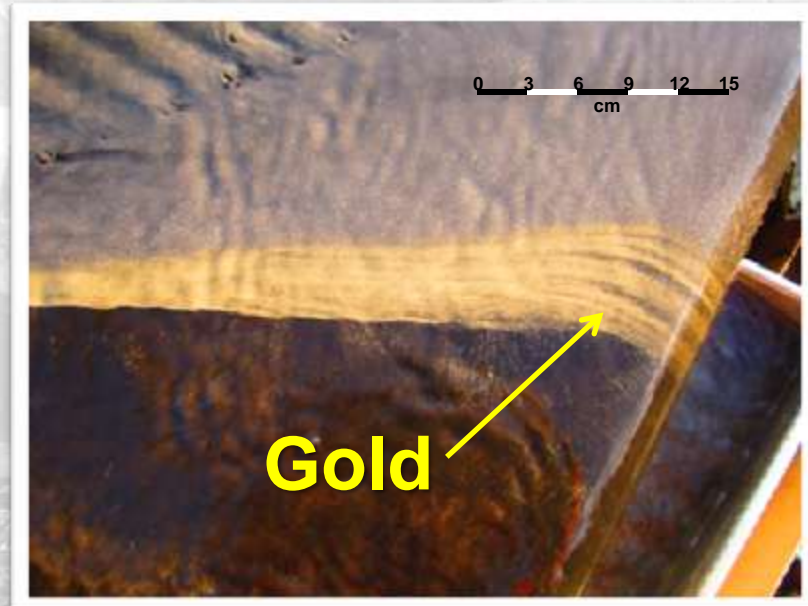
2011 Exploration Program & Results

- \$1.1 million exploration, bulk sampling and test milling program completed in 2011.
- Refurbished and optimized 30 tpd gravity separation mill circuit.
- 6 composite bulk samples (400 tonnes) mined from the Engineer Vein (5 underground) and Double Decker Vein (1 surface) and 246 tonnes milled in 2011.
- Produced 969.2 kg of dry concentrate averaging 2,193.1 g/t Au (64.0 oz/t Au), containing 68.3 oz. of gold. The Company will monetize this concentrate.
- Assay results from bulk samples 505-3A and 505-3B define the upper limits of a new Engineer Vein bulk sample exploration target between 5 and 6 Levels, believed to contain between 1,200 – 1,800 tonnes of material grading between 30-60 g/t gold and containing between 1,500 – 3,000 oz gold. BCGold intends to bulk sample and mill this material in 2012.



bc gold
CORP

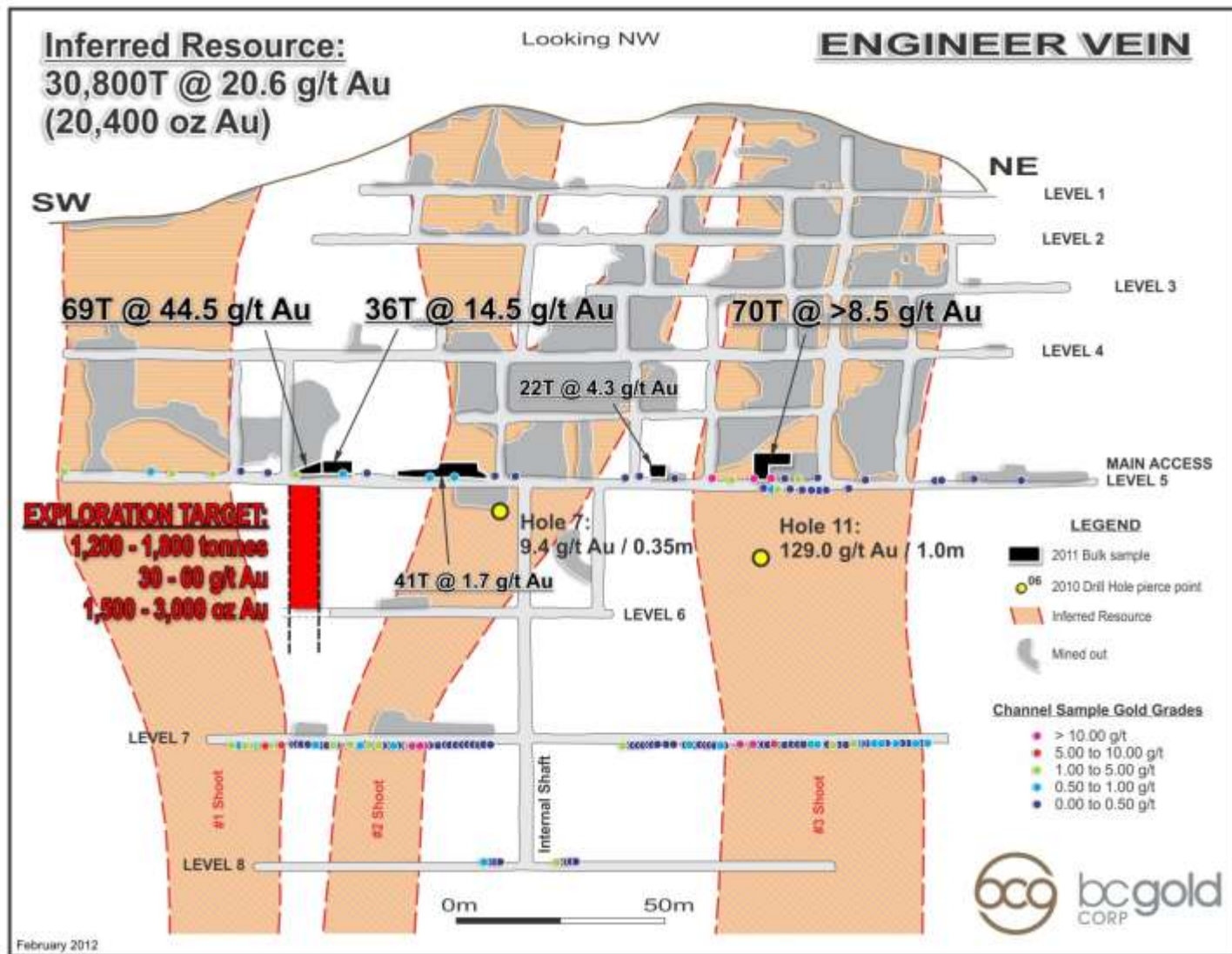
Engineer Vein, Bulk Sample Gold / Roscoelite and Gold Stream on Finishing Table





Engineer Vein Resource, 2011 Bulk Sample Results and 2021 Bulk Sample Target

bcgold
CORP





bcgold
CORP

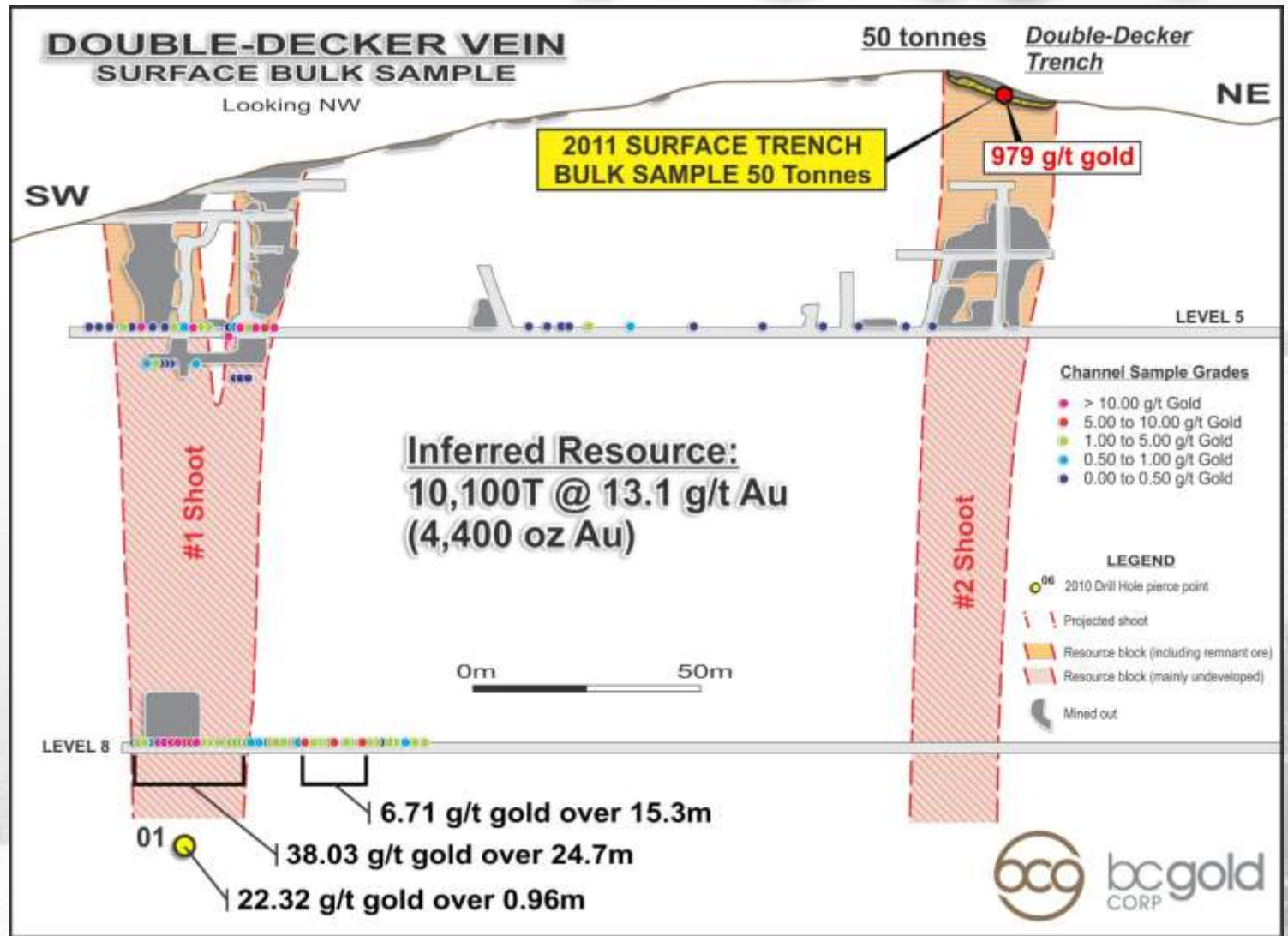
Mining 505-5 Bulk Sample Engineer Vein





Double Decker Vein Resource & 2011 Bulk Sample Location

bcgold
CORP



TSX-V: BCG



bc gold
CORP

Double Decker Vein Surface Bulk Sample



TSX-V: BCG



bcgold
CORP

Engineer Mine 2011 Bulk Sample Concentrate Assays & Contained Gold

Bulk Sample	Tonnes Milled	Concentrate Produced (dry kg)	Au (g/t)	Au (oz/ton)	Contained Au (g)	Contained Au (oz)
DD Trench	9.4	23.1	290.6	8.5	6.7	0.2
505-2	40.7	193.6	196.5	5.7	38.0	1.2
505-3A	35.5	194.9	1,251.7	36.5	244.0	7.8
505-3B	68.9	218.9	6,703.3	195.5	1,467.6	47.2
505-5*	69.7	272.3	1,210.2	35.3	329.5	10.6
505-6	21.9	66.3	596.7	17.4	39.6	1.3
TOTAL:	246.1	969.2	2,193.1	64.0	2,125.5	68.3

* Approximately 14 kg of hand specimens with >5% “wire” gold were removed from Bulk Sample 505-5 prior to crushing at the mill (see December 14, 2011 news release) and is therefore not reported as contained gold in concentrate.



bcgold
CORP

Engineer Mine Bulk Sample Concentrate Assay Results and Calculated Gold Content

Bulk Sample	Table Concentrate		Sluice Concentrate		HG Gold Stream		Contained Gold	
	Dry kg	Au (g/t)	Dry kg	Au (g/t)	Dry kg	Au (g/t)	Grams	Ounces
DD Trench	15.5	379.3	7.6	109.6	-	-	6.7	0.2
505-2	167.5	204.8	26.1	143.8	-	-	38.0	1.2
505-3A	172.3	1,324.1	22.6	699.7	-	-	244.0	7.8
505-3B	173.5	6,485.8	40.3	1,091.5	5.1	58,451.9	1,467.6	47.2
505-5*	228.1	1,382.2	44.2	322.5	-	-	329.5*	10.6*
505-6	58.7	621.2	7.6	406.9	-	-	39.6	1.3
Total	815.6	2,140.1	148.4	550.7	5.1	58,451.9	2,125.5	68.3

* Approximately 14 kg of hand specimens with >5% “wire” gold were removed from Bulk Sample 505-5 prior to crushing at the mill (see December 14, 2011 news release) and is therefore not reported as contained gold in concentrate.



bcgold
CORP

2011 Exploration Program & Results

- Bulk sampling is considered the final word when it comes to gold grade determination and assessing resource estimation accuracy at any given mine.
- Six bulk samples totalling 246.1 tonnes returned an average calculated mining diluted head grade of 16.9 g/t Au, including one 68.9 tonne bulk sample returning 44.6 g/t Au.
- Preliminary test milling averaged 51.3% gold recovery from the gravity recovery circuit.
- Bulk samples consistently returned much higher gold grades (average of 861% increase) than indicated by smaller volume channel samples collected in previous programs.
- Bulk sample results clearly indicate that test mining and test milling is the only reliable method to define “ore-grade” gold mineralization at Engineer Mine.



bcgold
CORP

Bulk Sample Calculated Diluted Mining Head Grades

Bulk Sample	Tonnes Milled	Contained Gold in Concentrate (grams)	Mill Recovery (%)	Mining Diluted Head Grade (Au g/t)
DD Trench	9.4	6.7	58.6%	1.2
505-2	40.7	38.0	56.5%	1.7
505-3A	35.5	244.0	47.5%	14.5
505-3B	68.9	1,467.6	47.8%	44.6
505-5*	69.7	329.5*	55.5%	8.5*
505-6	21.9	39.6	41.8%	4.3
Total	246.1	2,125.5	51.3%	16.9

* The contained gold in Bulk Sample 505-5 is underestimated due to the removal of 14 kg of hand specimens with >5% “wire” gold prior to milling. Therefore the calculated mining head grade could be significantly higher than reported.



bcgold
CORP

Bulk Sample vs. Channel Sample Gold Grade Comparison

Bulk Sample	Bulk Sample Calculated Mining Grade (Au g/t)	Channel Samples		% Difference
		No. of Samples	Predicted Grade (Au g/t)	
DD Trench	1.2	34*	0.95*	+26%
505-2	1.7	2	0.56	+204%
505-3A	14.5	1	0.69	+2,001%
505-3B	44.6	1	2.37	+1,782%
505-5	> 8.5**	3	36.49	N/A
505-6	4.3	2	1.12	+284%

* A total of 35 channel samples were collected from two benches of the Double Decker trench with one of these samples assaying 979 g/t Au as reported in an August 16, 2011 news release. The uncut average grade is 27.14 g/t Au when this high-grade sample is included in the calculation.

** Bulk Sample 505-5 does not include 14 kg of hand specimens with > 5% “wire” gold which were removed prior to crushing at the gravity separation mill.



bcgold
CORP

2011 Exploration Program & Results

- Bulk sample results indicate conventional sampling techniques can grossly underestimate gold grades and the current resource estimate is likely conservative and open to expansion.
- Completed a 600 line km SkyTEM deep penetrating Time-Domain Electromagnetic / Magnetic airborne survey over the Engineer and Gold Hill properties. Numerous exploration targets defined for follow-up.
- > 600 metres of trench excavation completed on the Boulder, Shaft, Double Decker and Shear “B” zones, all of which were either exposed or partially developed 120 metres vertically below on 5 Level in the 1920’s. The exposed veins have been geologically mapped and channel sampled.
- Gekko Systems of Ballarat, Australia engaged to conduct metallurgical studies consisting of bench-scale gravity and leach amenability tests on mill feed and table concentrate. Preliminary results expected by end of Q1, 2012.



bcgold
CORP

Near-Term Production Potential

- 2011 bulk sampling results indicates excellent upside to resource expansion and gold grade increase.
- The Engineer Mine Property hosts a robust and open mineralizing system. High-grade gold has been confirmed 21 metres below deepest mine level (8 level) on the Double Decker Vein and 17.5 metres below 5 level on the Engineer Vein by BCGold Corp. drilling in 2010.
- Production drifts in place for Engineer Vein between 5-8 Levels and Double Decker Vein on 5 and 8 Levels.
- Permit to dewater lowermost 3 levels in hand.
- Fully permitted, operational 30 tpd gravity separation mill on site. 2011 Metallurgical results anticipated to provide basis for mill optimization and increase in gold recoveries.



bc gold
CORP

Wire Gold in Roscoelite 505-5 Stope





bcgold
CORP

Blasting & Mucking – Engineer Vein





Tramming Engineer Bulk Samples

bcgold
CORP





Sample Loading Bay – Engineer Mine

bc gold
CORP





bc gold
CORP

Aerial View of Engineer Mill – 30 tpd





bc gold
CORP

Generator & Electrical Control Panels





Bulk Samples and Coarse Ore Bin

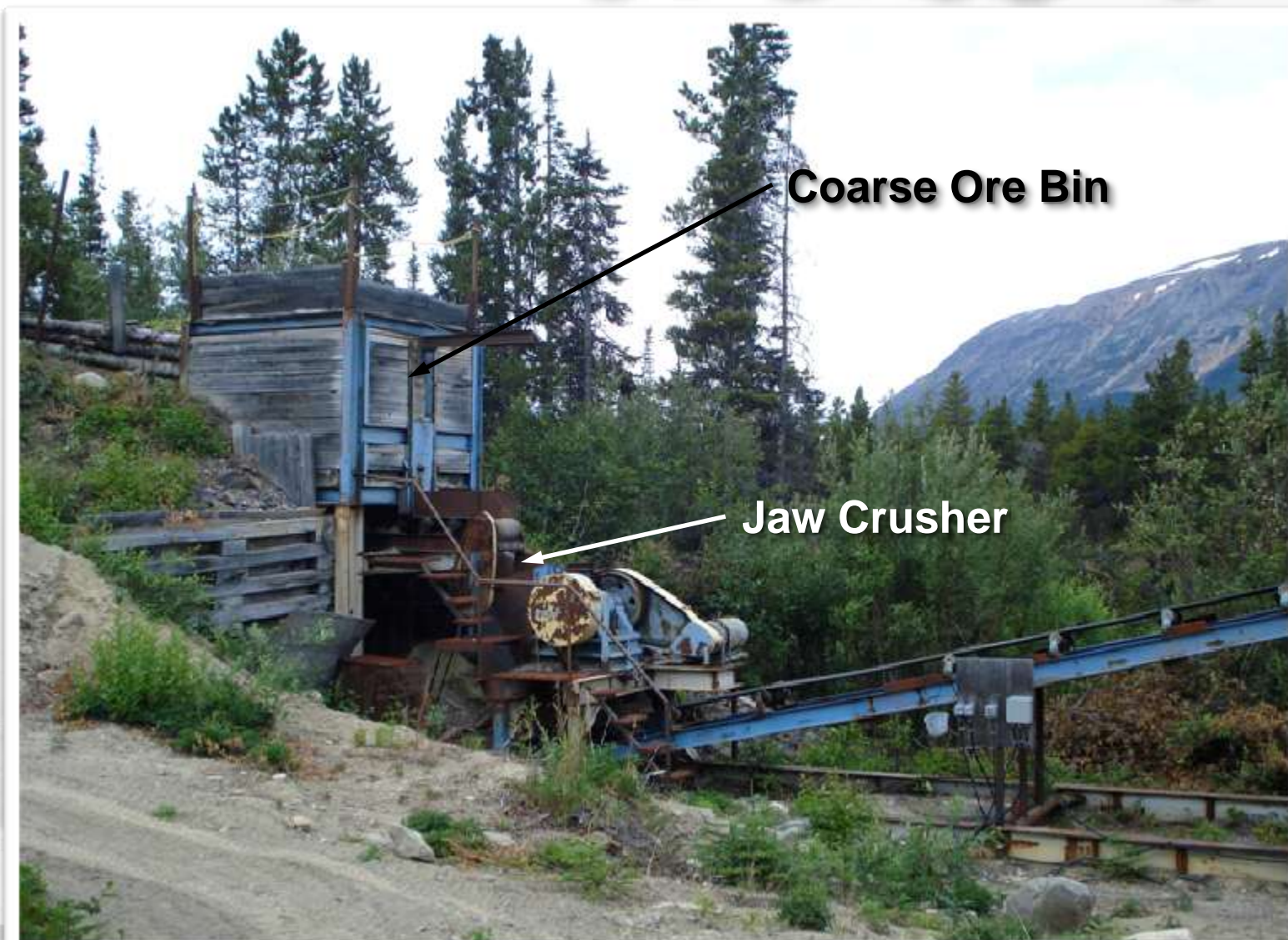
bcgold
CORP





Engineer Mill – Crushing Circuit

bc gold
CORP



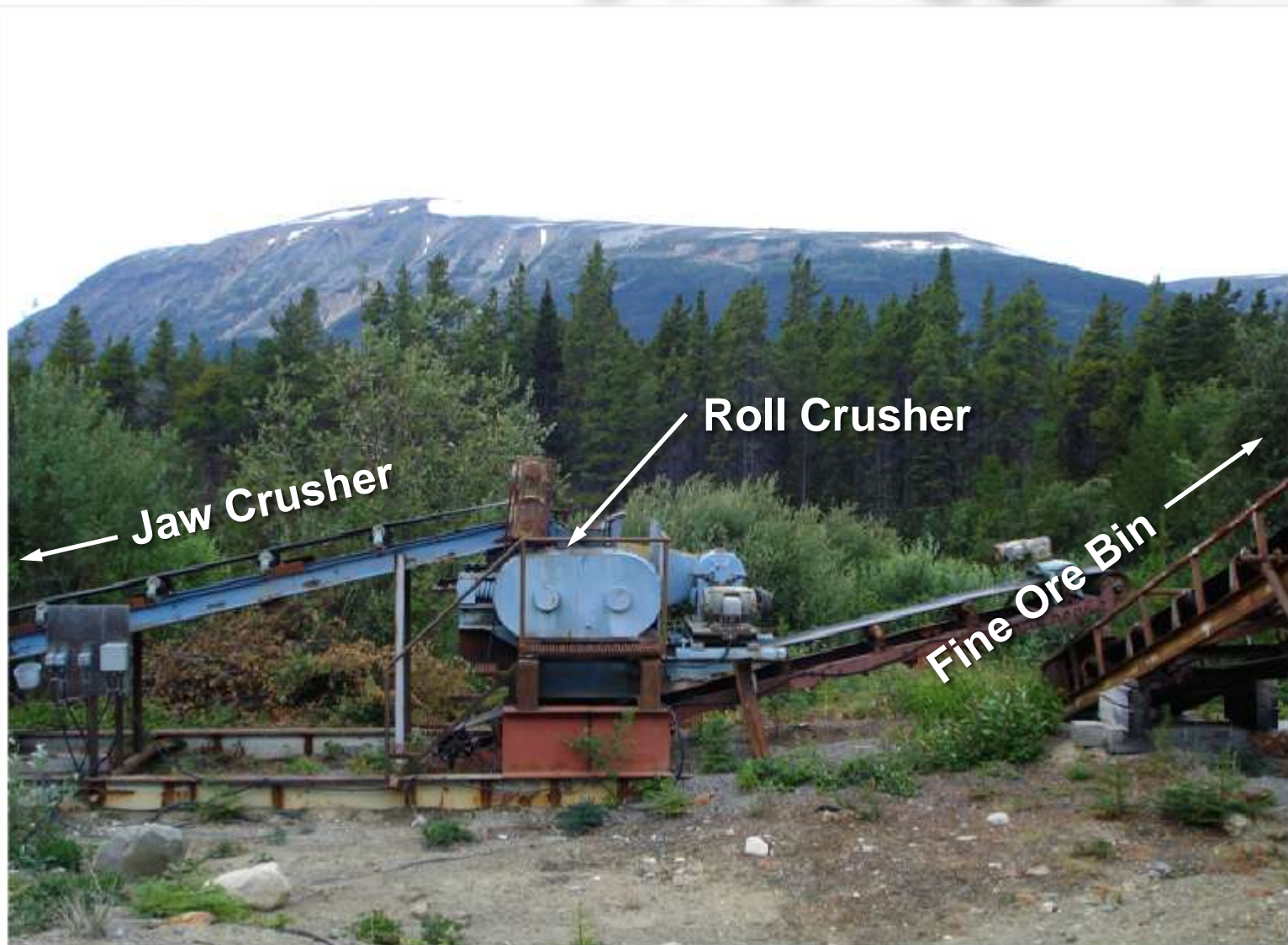
Coarse Ore Bin

Jaw Crusher



Engineer Mill – Crushing Circuit

bc gold
CORP



Jaw Crusher

Roll Crusher

Fine Ore Bin



Engineer Mill - Roll Crusher

bcgold
CORP



Roll Crusher
Close Up



bc gold
CORP

Engineer Mill – Crushing Circuit





Engineer Mill - Fine Ore Bin

bc gold
CORP



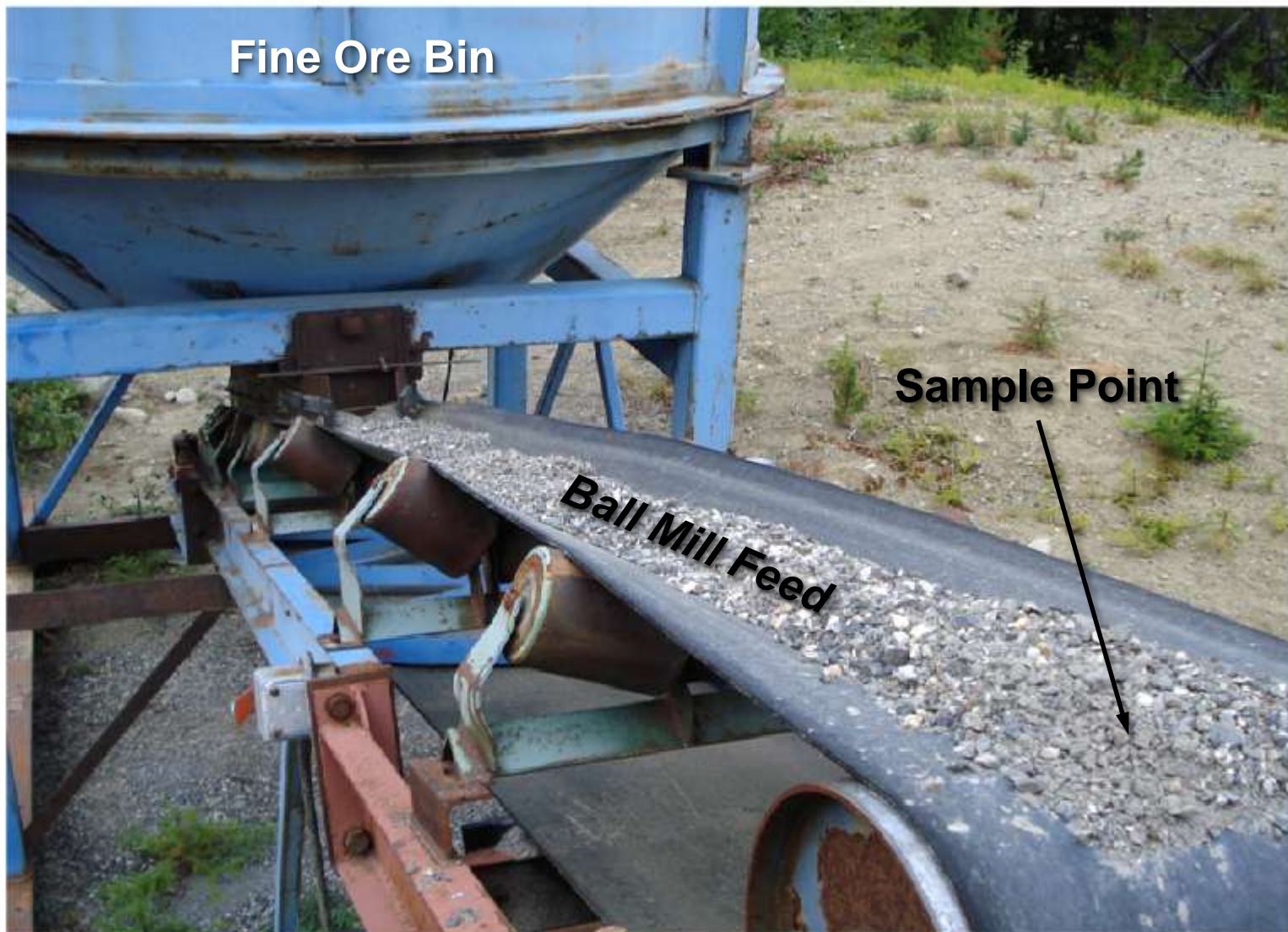
Fine Ore Bin

Ball Mill Feed
←



Engineer Ball Mill Feed Conveyor

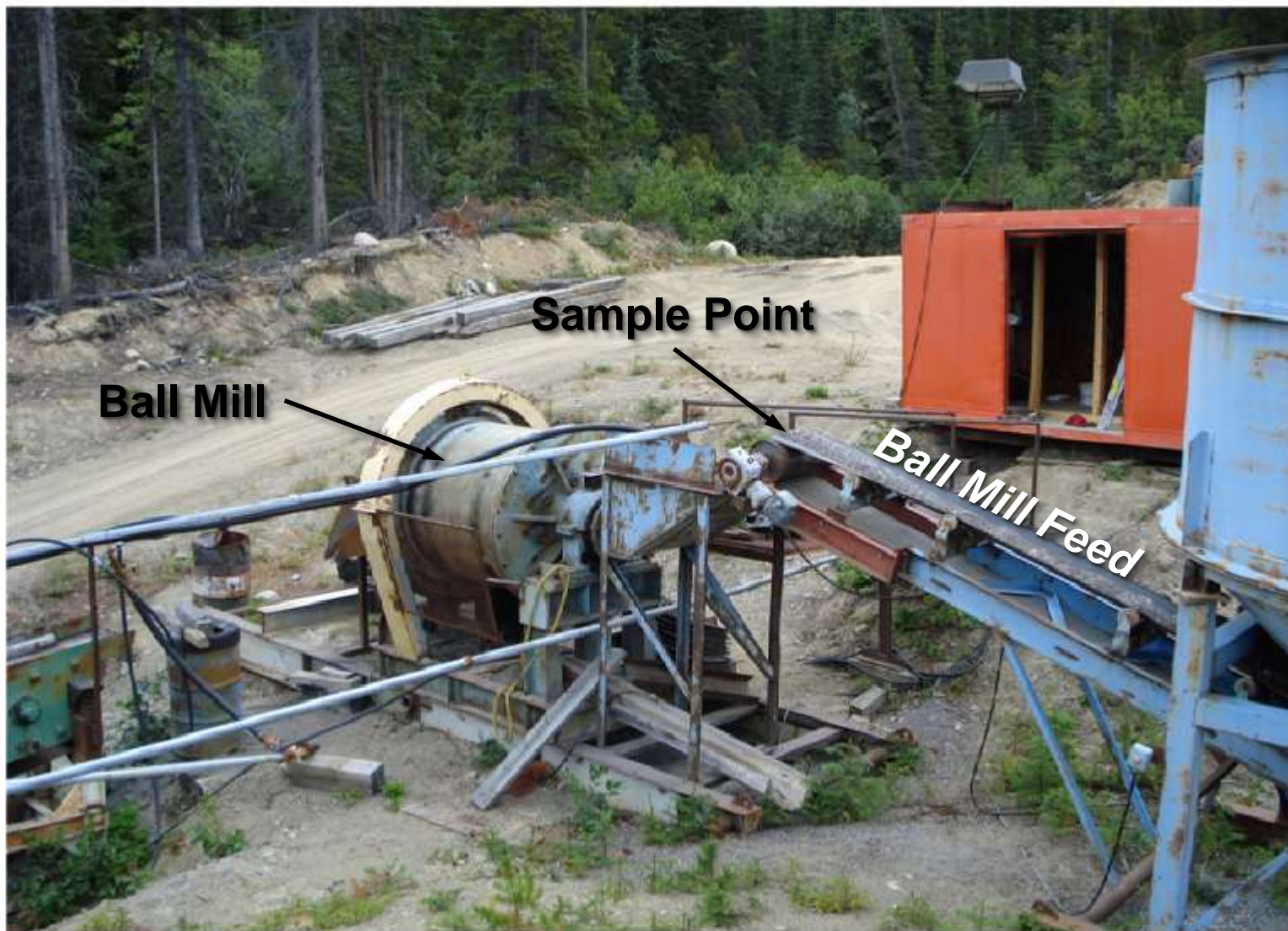
bc gold
CORP





Engineer 30 tpd Ball Mill

bc gold
CORP



Sample Point

Ball Mill

Ball Mill Feed



Sluice Box & Screen Decks

bcgold
CORP



Ball Mill

Screen Deck



Large Deister Tables

bc gold
CORP

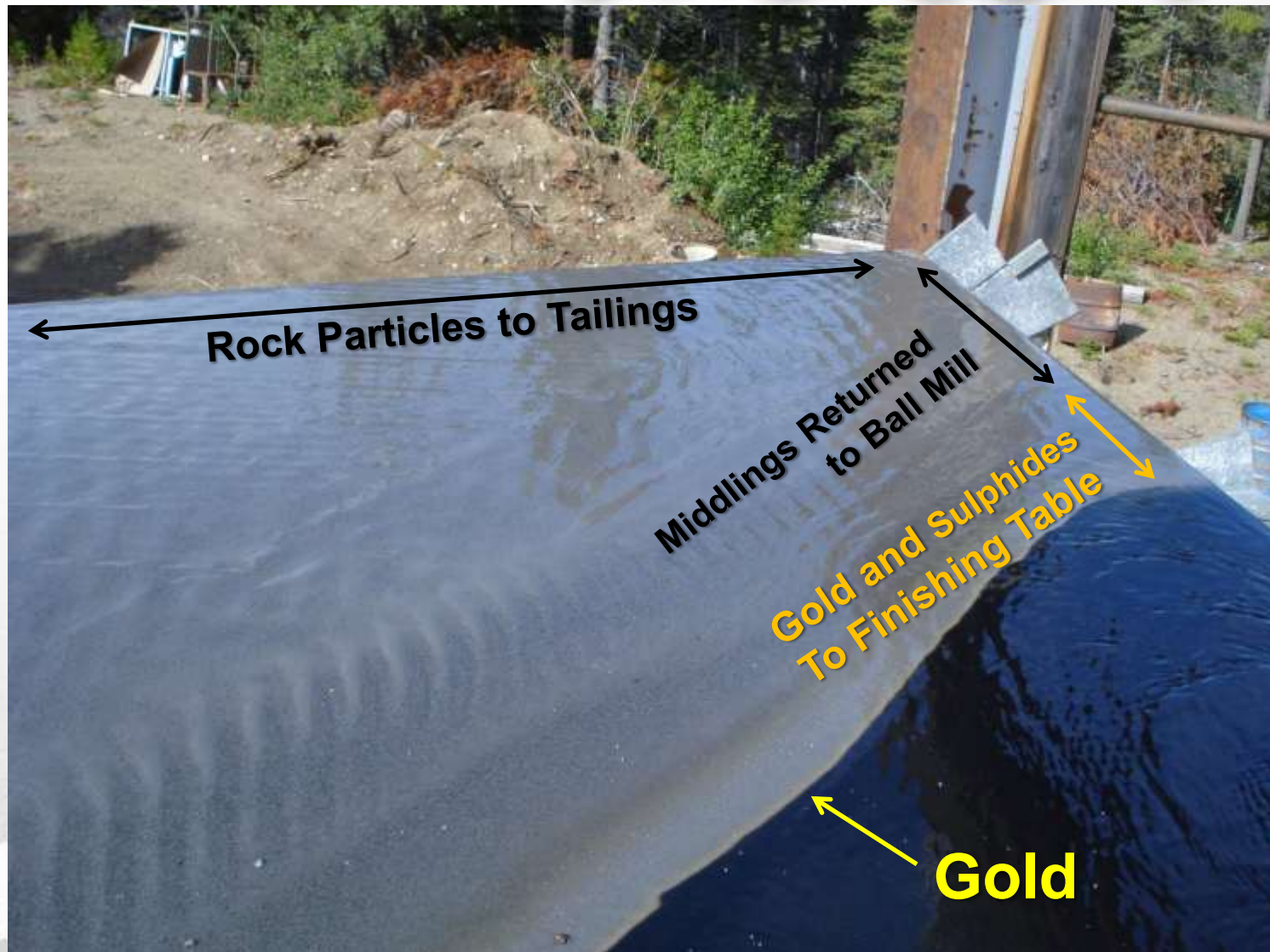


TSX-V: BCG



Bulk Sample 505-3A on Deister Table

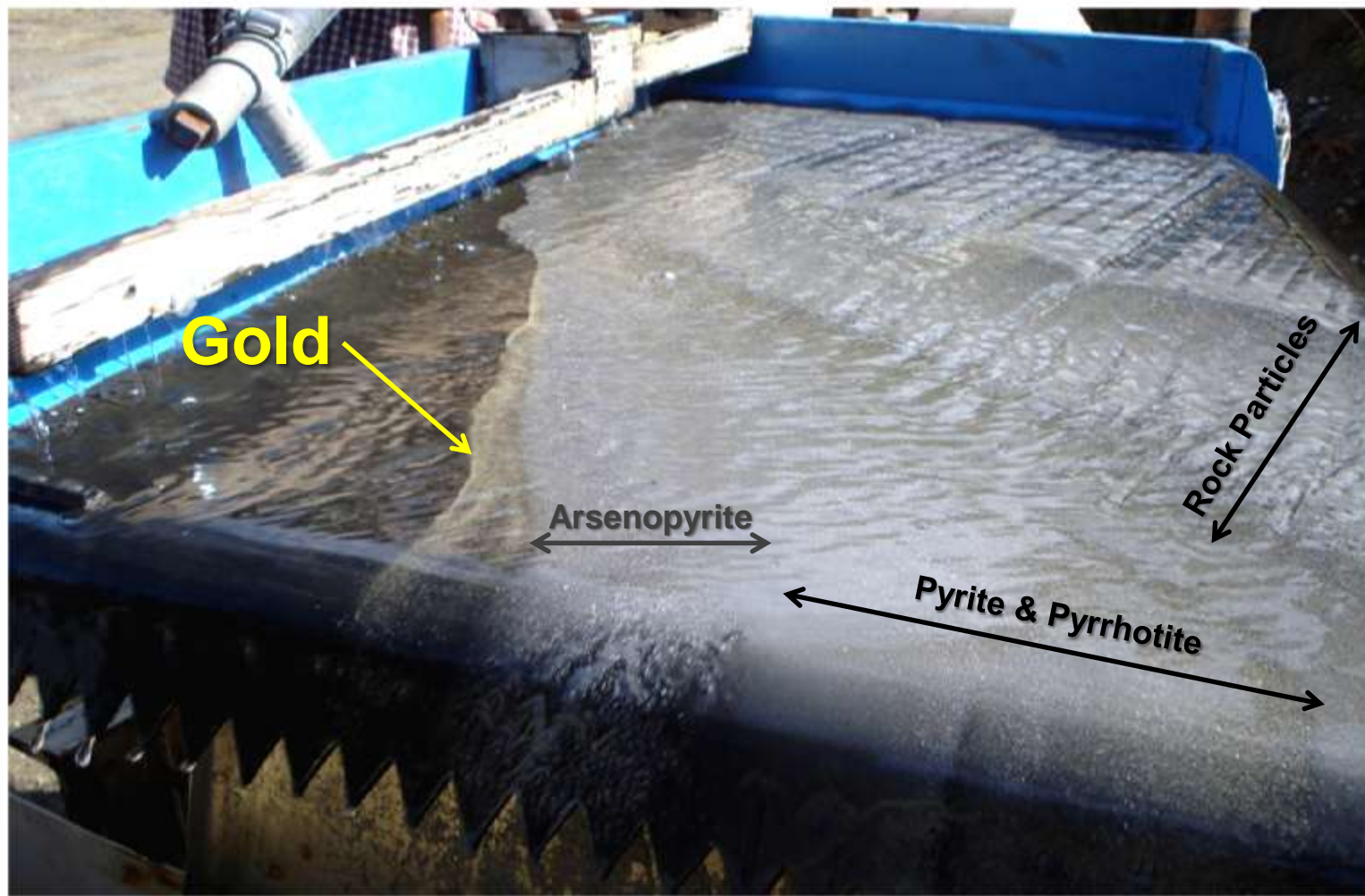
bc gold
CORP





Bulk Sample 505-3A on Finishing Table

bcgold
CORP





bcgold
CORP

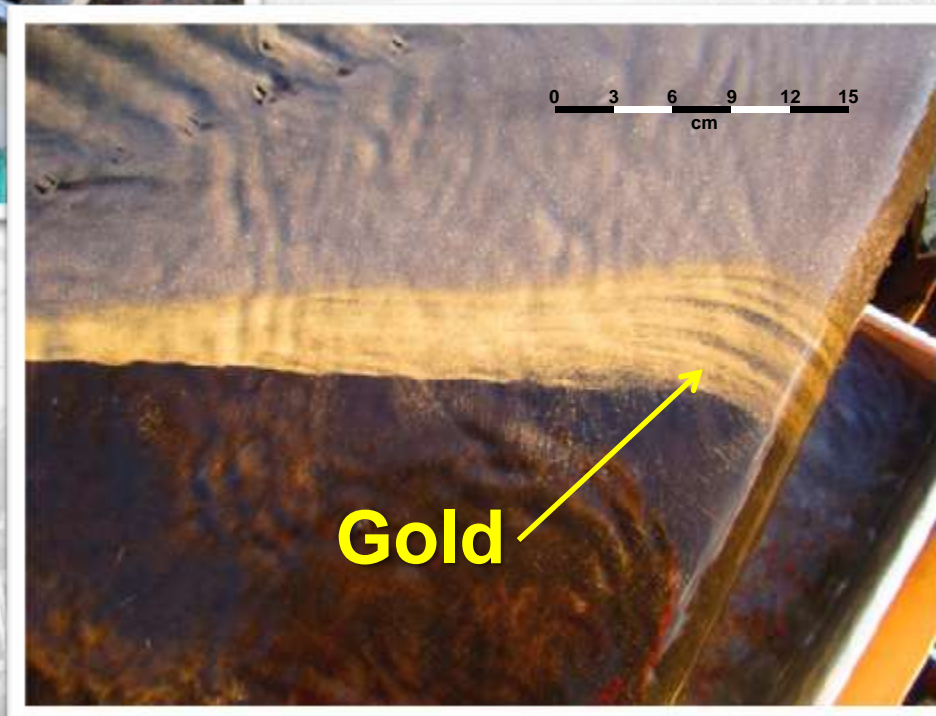
Engineer Vein Gold – Finishing Table





Finishing Table and Gold Line

bc gold
CORP





On-Going Studies

- Mill feed samples and concentrate currently being processed by Gekko Systems for bench scale gravity and leach amenability metallurgical test work.
- Metallurgical results expected in early 2012 and will:
 - determine marketability of concentrate,
 - recommend mill modifications to enhance onsite gold recovery,
 - provide basis for continued bulk sampling and mining.



bcgold
CORP

Going Forward - 2012 Exploration Plans

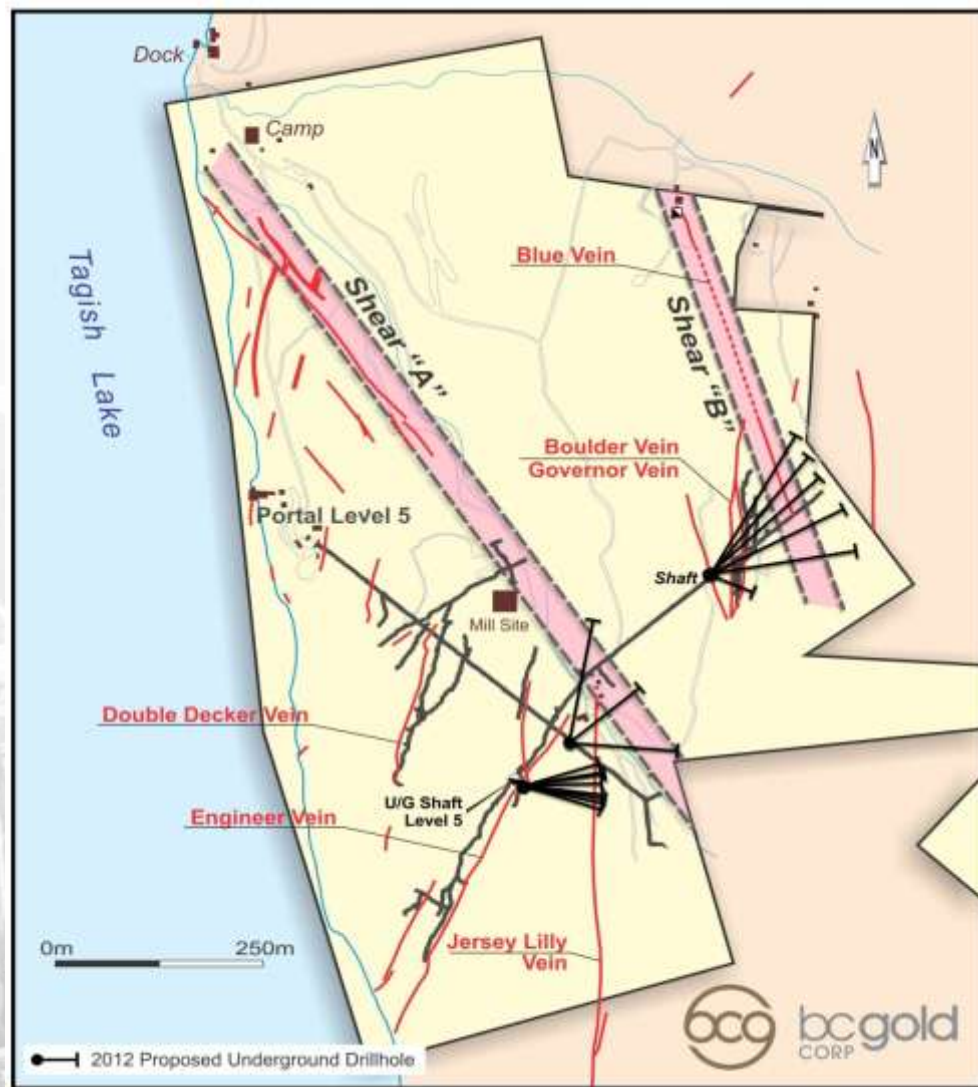
- BCGold Corp. believes the real value in the Engineer Mine Property is the exploration potential. Only a small portion of the extensive vein system has been evaluated to date.
- BCGold Corp. is uniquely positioned to offset exploration costs at the Engineer Mine Property by monetizing / forward selling gold concentrate recovered from on-site processing of bulk sample material, thereby minimizing dilutive share issuances through equity financings.
- BCGold Corp. is formulating plans to conduct a staged \$2.5 million exploration and development program at Engineer Mine in 2012 that will include dewatering the lowermost levels, mine rehabilitation, additional bulk sampling, test milling and significant diamond drilling.



bcgold
CORP

Engineer Mine Property – 2012 Proposed Underground Drill Program (3,000 metres)

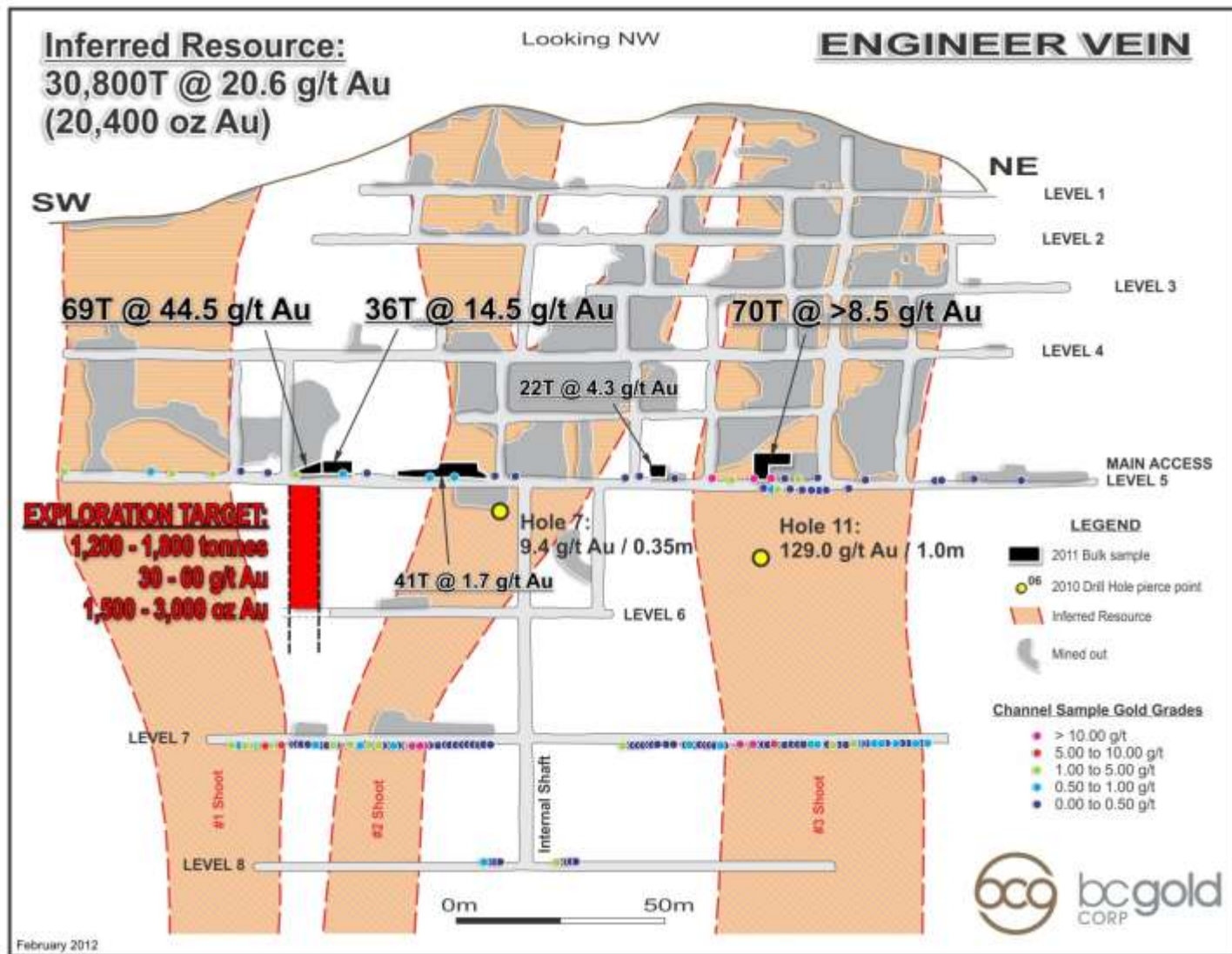
- Staged \$2.5M program proposed for 2012.
- Program to include 3,000 m underground drilling, mine dewatering (to 7 Level), rehabilitation, mapping, sampling, test mining, bulk sampling and milling of high-grade Engineer Vein exploration target from Level 6 (1,500 – 3,000 oz gold @ 30 – 60 g/t gold).
- Drill program to increase resource, targeting 4 veins (Boulder, Governor, Shaft & Jersey Lilly) and 2 bulk-tonnage shear zone targets (Shear A & Shear B).
- 2 drill bays prepared and ready to go.





Engineer Vein Resource, 2011 Bulk Sample Results and 2021 Bulk Sample Target

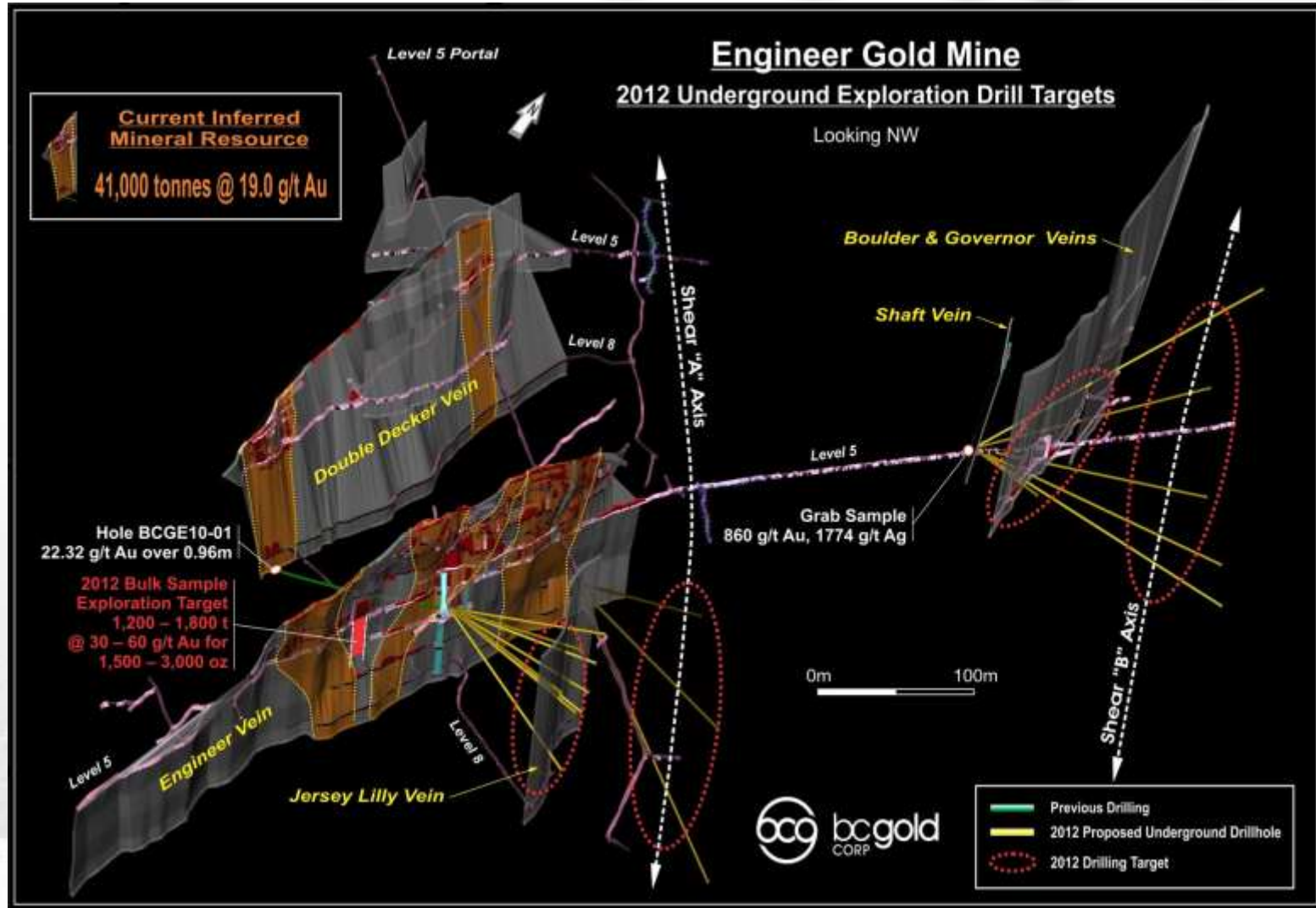
bcgold
CORP





Engineer Mine - 2012 Proposed Drilling and Bulk Sampling Program

bcgold
CORP

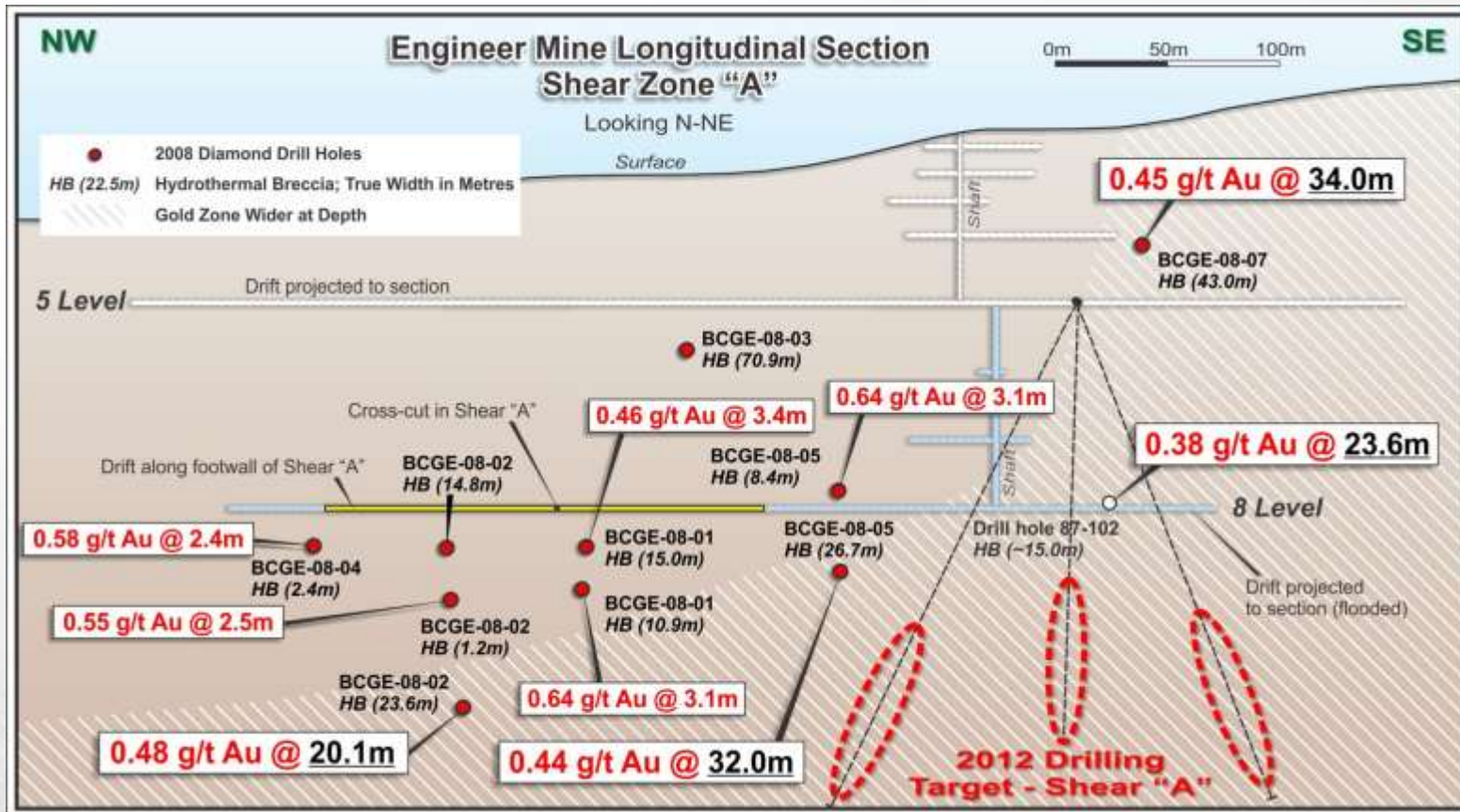


TSX-V: BCG



Shear Zone 'A' Bulk Tonnage Target 2012 Proposed Drilling

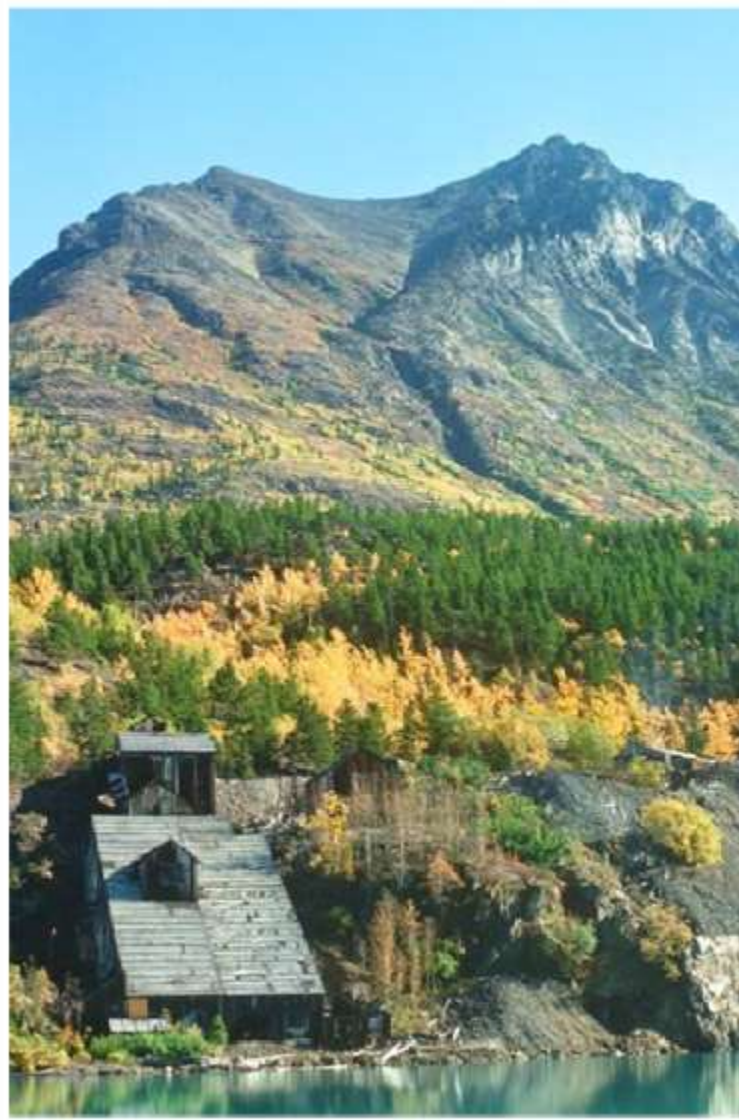
bc gold
CORP





BCGold Corp – Reviving the Engineer Mine

bc gold
CORP



2010 Underground Drilling



TSX-V: BCG



Notes

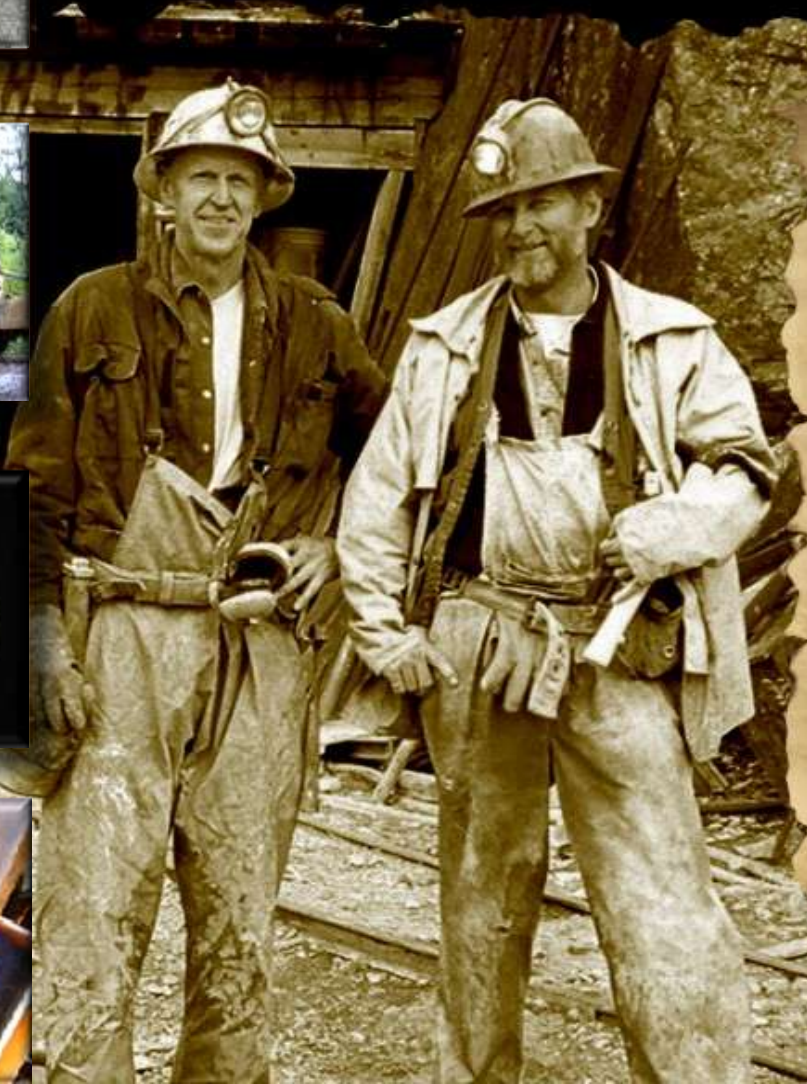
bc gold
CORP



TSX-V: BCG



TSX-V: BCG



BCGold Corp.
"Discovery Driven"

Engineer
Gold Mine, B.C.

**2011 Bulk Sampling,
Test Milling &
Exploration Program**